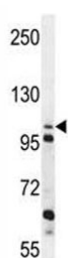


## ZGRF1 Antibody (F40009)

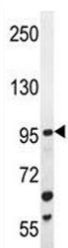
Catalog No.	Formulation	Size
F40009-0.4ML	In 1X PBS, pH 7.4, with 0.09% sodium azide	0.4 ml
F40009-0.08ML	In 1X PBS, pH 7.4, with 0.09% sodium azide	0.08 ml

[Bulk quote request](#)

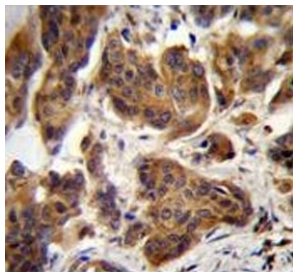
<b>Availability</b>	1-3 business days
<b>Species Reactivity</b>	Human, Mouse
<b>Format</b>	Antigen affinity purified
<b>Clonality</b>	Polyclonal (rabbit origin)
<b>Isotype</b>	Rabbit Ig
<b>Purity</b>	Antigen affinity
<b>UniProt</b>	Q86YA3
<b>Applications</b>	Western Blot : 1:1000 IHC (Paraffin) : 1:50-1:100 Immunofluorescence : 1:10-1:50
<b>Limitations</b>	This ZGRF1 antibody is available for research use only.



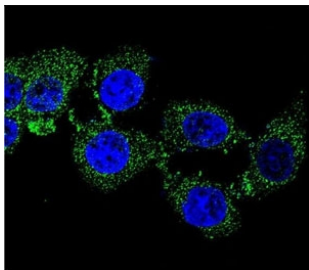
ZGRF1 antibody western blot analysis in K562 lysate



ZGRF1 antibody western blot analysis in mouse Neuro-2a lysate



ZGRF1 antibody immunohistochemistry analysis in formalin fixed and paraffin embedded human bladder carcinoma.



Confocal immunofluorescent analysis of ZGRF1 antibody with 293 cells followed by Alexa Fluor 488-conjugated goat anti-rabbit IgG (green). DAPI was used as a nuclear counterstain (blue).

## Description

GRF-type zinc finger domain-containing protein 1

## Application Notes

Titration of the ZGRF1 antibody may be required due to differences in protocols and secondary/substrate sensitivity.

## Immunogen

A portion of amino acids 38-66 from the human protein was used as the immunogen for this ZGRF1 antibody.

## Storage

Aliquot the ZGRF1 antibody and store frozen at -20oC or colder. Avoid repeated freeze-thaw cycles.