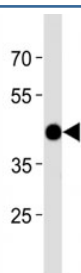


Zebrafish Atf4 Antibody (F52258)

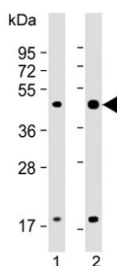
Catalog No.	Formulation	Size
F52258-0.4ML	In 1X PBS, pH 7.4, with 0.09% sodium azide	0.4 ml
F52258-0.08ML	In 1X PBS, pH 7.4, with 0.09% sodium azide	0.08 ml

[Bulk quote request](#)

Availability	1-3 business days
Species Reactivity	Zebrafish
Format	Antigen affinity purified
Clonality	Polyclonal (rabbit origin)
Isotype	Rabbit Ig
Purity	Antigen affinity
UniProt	Q6NW59
Applications	Western Blot : 1:1000
Limitations	This zebrafish Atf4 antibody is available for research use only.



Atf4 antibody western blot analysis in zebrafish muscle tissue lysate.



Western blot testing of 1) whole zebrafish and 2) zebrafish muscle lysate with zebrafish Atf4 antibody. Expected molecular weight: 38-50 kDa.

Description

Transcriptional activator. Binds the cAMP response element (CRE) (consensus: 5'-GTGACGT[AC][AG]-3'), a sequence present in many viral and cellular promoters (By similarity).

Application Notes

Titration of the zebrafish Atf4 antibody may be required due to differences in protocols and secondary/substrate sensitivity.

Immunogen

A portion of amino acids 288-314 from the zebrafish protein was used as the immunogen for this Atf4 antibody.

Storage

Aliquot the zebrafish Atf4 antibody and store frozen at -20oC or colder. Avoid repeated freeze-thaw cycles.