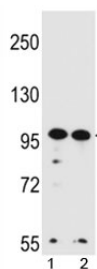


WDR3 Antibody (F42257)

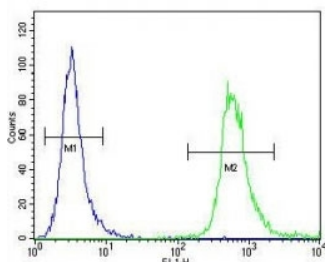
Catalog No.	Formulation	Size
F42257-0.4ML	In 1X PBS, pH 7.4, with 0.09% sodium azide	0.4 ml
F42257-0.08ML	In 1X PBS, pH 7.4, with 0.09% sodium azide	0.08 ml

Bulk quote request

Availability	1-3 business days
Species Reactivity	Human
Format	Antigen affinity purified
Clonality	Polyclonal (rabbit origin)
Isotype	Rabbit Ig
Purity	Antigen affinity
UniProt	Q9UNX4
Applications	Western Blot : 1:1000 Flow Cytometry : 1:10-1:50
Limitations	This WDR3 antibody is available for research use only.



WDR3 antibody western blot analysis in HeLa, K562 lysate.



WDR3 antibody flow cytometric analysis of HeLa cells (green) compared to a [negative control](#) (blue). FITC-conjugated goat-anti-rabbit secondary Ab was used for the analysis.

Description

This gene encodes a nuclear protein containing 10 WD repeats. WD repeats are approximately 30- to 40-amino acid domains containing several conserved residues, which usually include a trp-asp at the C-terminal end. Proteins belonging to the WD repeat family are involved in a variety of cellular processes, including cell cycle progression, signal transduction, apoptosis, and gene regulation.

Application Notes

Titration of the WDR3 antibody may be required due to differences in protocols and secondary/substrate sensitivity.

Immunogen

A portion of amino acids 208-236 from the human protein was used as the immunogen for this WDR3 antibody.

Storage

Aliquot the WDR3 antibody and store frozen at -20oC or colder. Avoid repeated freeze-thaw cycles.