

VPS52 Antibody / SACM2L (F54565)

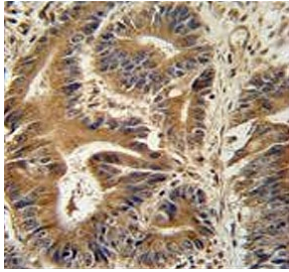
Catalog No.	Formulation	Size
F54565-0.4ML	In 1X PBS, pH 7.4, with 0.09% sodium azide	0.4 ml
F54565-0.08ML	In 1X PBS, pH 7.4, with 0.09% sodium azide	0.08 ml

[Bulk quote request](#)

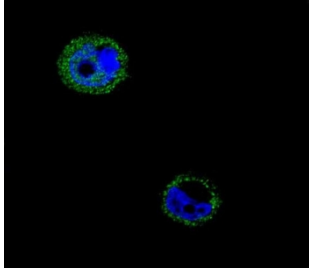
Availability	1-3 business days
Species Reactivity	Human
Format	Purified
Host	Rabbit
Clonality	Polyclonal (rabbit origin)
Isotype	Rabbit Ig
Purity	Antigen affinity purified
UniProt	Q8N1B4
Localization	Cytoplasmic
Applications	Immunofluorescence : 1:25 Flow Cytometry : 1:25 (1x10e6 cells) Immunohistochemistry (FFPE) : 1:25 Western Blot : 1:500-1:2000
Limitations	This VPS52 antibody is available for research use only.

kDa
250
130
95
72
55

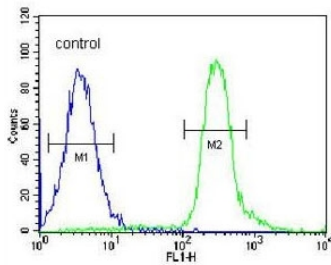
Western blot testing of human MDA-MB-435 cell lysate with VPS52 antibody. Predicted molecular weight ~82 kDa (isoform 1) and 68 kDa (isoform 2).



IHC testing of FFPE human colon carcinoma tissue with VPS52 antibody. HIER: steam section in pH6 citrate buffer for 20 min and allow to cool prior to staining.



Immunofluorescent staining of human MCF7 cells with VPS52 antibody (green) and DAPI nuclear stain (blue).



Flow cytometry testing of human MDA-MB-435 cells with VPS52 antibody; Blue=isotype control, Green= VPS52 antibody.

Description

This gene encodes a protein that is similar to the yeast suppressor of actin mutations 2 gene. The yeast protein forms a subunit of the tetrameric Golgi-associated retrograde protein complex that is involved in vesicle trafficking from from both early and late endosomes, back to the trans-Golgi network. This gene is located on chromosome 6 in a head-to-head orientation with the gene encoding ribosomal protein S18.

Application Notes

The stated application concentrations are suggested starting points. Titration of the VPS52 antibody may be required due to differences in protocols and secondary/substrate sensitivity.

Immunogen

A portion of amino acids 610-637 from the human protein was used as the immunogen for the VPS52 antibody.

Storage

Aliquot the VPS52 antibody and store frozen at -20oC or colder. Avoid repeated freeze-thaw cycles.

