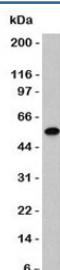


Vimentin Antibody [clone VIM66-1] (V7003)

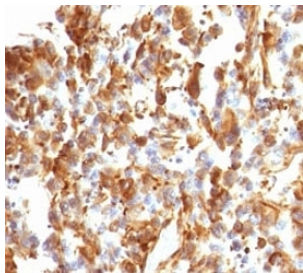
Catalog No.	Formulation	Size
V7003-100UG	0.2 mg/ml in 1X PBS with 0.1 mg/ml BSA (US sourced) and 0.05% sodium azide	100 ug
V7003-20UG	0.2 mg/ml in 1X PBS with 0.1 mg/ml BSA (US sourced) and 0.05% sodium azide	20 ug
V7003SAF-100UG	1 mg/ml in 1X PBS; BSA free, sodium azide free	100 ug
V7003IHC-7ML	Prediluted in 1X PBS with 0.1 mg/ml BSA (US sourced) and 0.05% sodium azide; *For IHC use only*	7 ml

[Bulk quote request](#)

Species Reactivity	Human
Format	Purified
Host	Mouse
Clonality	Monoclonal (mouse origin)
Isotype	Mouse IgG1, kappa
Clone Name	VIM66-1
Purity	Protein G affinity chromatography
Buffer	1X PBS, pH 7.4
UniProt	P08670
Localization	Cytoplasmic
Applications	Western Blot : 1-2ug/ml Immunohistochemistry (FFPE) : 1-2ug/ml for 30 min at RT (1) Prediluted IHC Only Format : incubate for 30 min at RT (2)
Limitations	This Vimentin antibody is available for research use only.



Western blot testing of Vimentin antibody (clone VIM66-1) and Raji cell lysate. Predicted molecular weight ~58 kDa.



IHC analysis of FFPE human melanoma stained with Vimentin antibody (clone VIM66-1).

Description

Vimentins are class-III intermediate filaments found in various non-epithelial cells, especially mesenchymal cells. Vimentin is attached to the nucleus, endoplasmic reticulum, and mitochondria, either laterally or terminally. It is involved with LARP6 in the stabilization of type I collagen mRNAs for CO1A1 and CO1A2. [UniProt]

Application Notes

Titering of the Vimentin antibody may be required for optimal performance.

1. FFPE testing requires sections to be boiled in pH 9 10mM Tris with 1mM EDTA for 10-20 minutes, followed by cooling at RT for 20 minutes, prior to staining.
2. The prediluted format is supplied in a dropper bottle and is optimized for use in IHC. After epitope retrieval step (if required), drip mAb solution onto the tissue section and incubate at RT for 30 min.

Immunogen

Full length human recombinant protein was used as the immunogen for the Vimentin antibody.

Storage

Store the Vimentin antibody at 2-8oC (with azide) or aliquot and store at -20oC or colder (without azide).