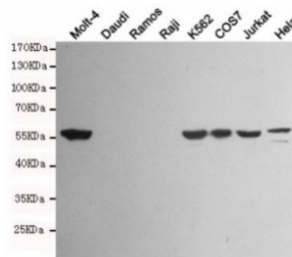


## Vimentin Antibody [clone 4F8-A5-H5] (F54035)

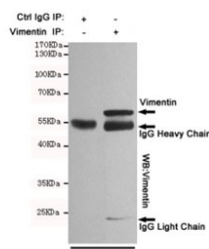
Catalog No.	Formulation	Size
F54035-0.1ML	In PBS with 50% glycerol and 0.03% ProClin 300	0.1 ml

**Bulk quote request**

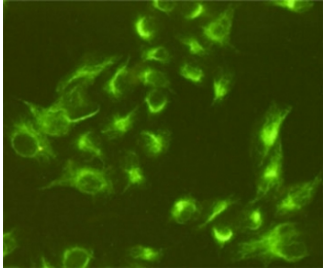
<b>Availability</b>	1-3 business days
<b>Species Reactivity</b>	Human
<b>Format</b>	Purified
<b>Host</b>	Mouse
<b>Clonality</b>	Monoclonal (mouse origin)
<b>Isotype</b>	Mouse IgG2a
<b>Clone Name</b>	4F8-A5-H5
<b>Purity</b>	Protein G affinity
<b>UniProt</b>	P08670
<b>Applications</b>	Western Blot : 1:1000 ICC/IF : 1:800 Immunoprecipitation : suitable
<b>Limitations</b>	This Vimentin antibody is available for research use only.



Western blot testing of Vimentin-positive cell lines (Molt-4, K562, COS7, Jurkat, HeLa) and Vimentin-negative cell lines (Daudi, Ramos, Raji) using Vimentin antibody at 1:1000. Predicted molecular weight ~58 kDa.



Immunoprecipitation of Vimentin from HeLa cell lysate, and subsequent western blot testing, using Vimentin antibody.



ICC/IF staining of HeLa cells, fixed with 4% Paraformaldehyde, using Vimentin antibody at 1:800.

## Description

Vimentins are class-III intermediate filaments found in various non-epithelial cells, especially mesenchymal cells. Vimentin is attached to the nucleus, endoplasmic reticulum, and mitochondria, either laterally or terminally.

## Application Notes

The stated application concentrations are suggested starting points. Titration of the Vimentin antibody may be required due to differences in protocols and secondary/substrate sensitivity.

## Immunogen

A human recombinant partial protein was used as the immunogen for this Vimentin antibody.

## Storage

Store the Vimentin antibody at -20oC.