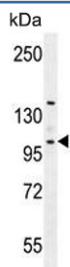


Villin-like protein Antibody / VILL (F54634)

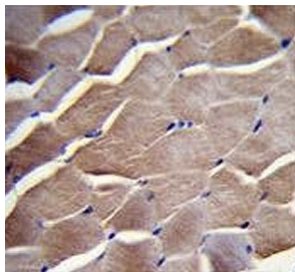
Catalog No.	Formulation	Size
F54634-0.4ML	In 1X PBS, pH 7.4, with 0.09% sodium azide	0.4 ml
F54634-0.08ML	In 1X PBS, pH 7.4, with 0.09% sodium azide	0.08 ml

Bulk quote request

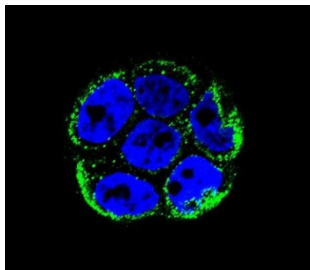
Availability	1-3 business days
Species Reactivity	Human
Format	Purified
Clonality	Polyclonal (rabbit origin)
Isotype	Rabbit Ig
Purity	Antigen affinity purified
UniProt	O15195
Localization	Cytoplasmic
Applications	Flow Cytometry : 1:25 (1x10e6 cells) Immunofluorescence : 1:25 Immunohistochemistry (FFPE) : 1:25 Western Blot : 1:500-1:2000
Limitations	This Villin-like protein antibody is available for research use only.



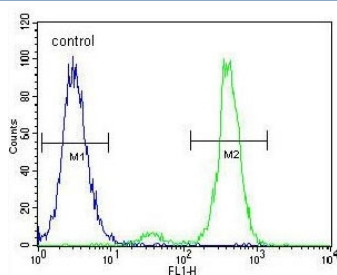
Western blot testing of human K562 cell lysate with Villin-like protein antibody. Predicted molecular weight ~96 kDa.



IHC testing of FFPE human skeletal muscle tissue with Villin-like protein antibody. HIER: steam section in pH6 citrate buffer for 20 min and allow to cool prior to staining.



Immunofluorescent staining of human WiDr cells with Villin-like protein antibody (green) and DAPI nuclear stain (blue).



Flow cytometry testing of human K562 cells with Villin-like protein antibody; Blue=isotype control, Green= Villin-like protein antibody.

Description

The protein encoded by this gene belongs to the villin/gelsolin family. It contains 6 gelsolin-like repeats and a headpiece domain. It may play a role in actin-bundling. [RefSeq].

Application Notes

The stated application concentrations are suggested starting points. Titration of the Villin-like protein antibody may be required due to differences in protocols and secondary/substrate sensitivity.

Immunogen

A portion of amino acids 385-412 from the human protein was used as the immunogen for the Villin-like protein antibody.

Storage

Aliquot the Villin-like protein antibody and store frozen at -20oC or colder. Avoid repeated freeze-thaw cycles.