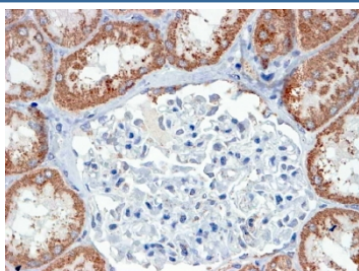


USP16 Antibody (R34100)

Catalog No.	Formulation	Size
R34100-100UG	0.5 mg/ml in 1X TBS, pH7.3, with 0.5% BSA (US sourced) and 0.02% sodium azide	100 ug

Bulk quote request

Availability	1-3 business days
Species Reactivity	Human
Predicted Reactivity	Cow, Dog, Mouse, Pig, Rat
Format	Antigen affinity purified
Clonality	Polyclonal (goat origin)
Isotype	Goat Ig
Purity	Antigen affinity
Gene ID	10600
Applications	Immunohistochemistry (FFPE) : 4-8ug/ml ELISA (peptide) LOD : 1:32000
Limitations	This USP16 antibody is available for research use only.



IHC testing of FFPE human human kidney with USP16 antibody at 4ug/ml. HIER: steamed with pH9 Tris/EDTA buffer, HRP-staining.

Description

Additional name(s) for this target protein: Ubiquitin specific protease 16

Application Notes

Optimal dilution of the USP16 antibody should be determined by the researcher.

1. This USP16 antibody will detect isoforms a and b of the protein.

Immunogen

Amino acids GKKRTKGKTVPIDD were used as the immunogen for this USP16 antibody.

Storage

Aliquot and store the USP16 antibody at -20oC.