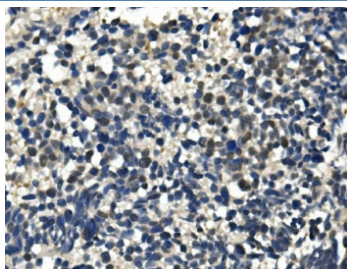


ULK1 Antibody (RQ6015)

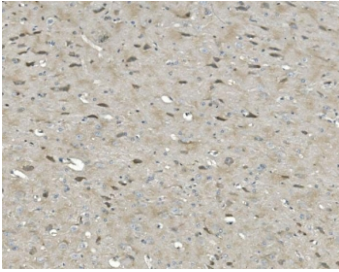
Catalog No.	Formulation	Size
RQ6015	0.5mg/ml if reconstituted with 0.2ml sterile DI water	100 ug

Bulk quote request

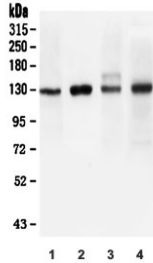
Availability	1-3 business days
Species Reactivity	Human, Mouse, Rat
Format	Antigen affinity purified
Host	Rabbit
Clonality	Polyclonal (rabbit origin)
Isotype	Rabbit IgG
Purity	Affinity purified
Buffer	Lyophilized from 1X PBS with 2% Trehalose and 0.025% sodium azide
UniProt	O75385
Localization	Cytoplasmic
Applications	Western Blot : 0.5-1ug/ml Immunohistochemistry : 1-2ug/ml Flow Cytometry : 1-3ug/million cells
Limitations	This ULK1 antibody is available for research use only.



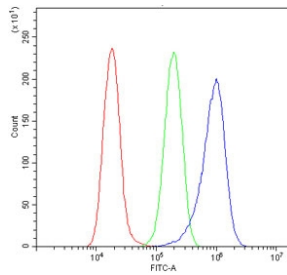
IHC staining of FFPE human lung cancer with ULK1 antibody. HIER: boil tissue sections in pH8 EDTA for 20 min and allow to cool before testing.



IHC staining of FFPE rat brain with ULK1 antibody. HIER: boil tissue sections in pH8 EDTA for 20 min and allow to cool before testing.



Western blot testing of 1) human A549, 2) human ThP-1, 3) rat brain and 4) mouse brain lysate with ULK1 antibody. Predicted molecular weight: 112-150 kDa.



Flow cytometry testing of human A549 cells with ULK1 antibody at 1ug/million cells (blocked with goat sera); Red=cells alone, Green=isotype control, Blue= ULK1 antibody.

Description

ULK1 is an enzyme that in humans is encoded by the ULK1 gene. It is mapped to 12q24.33. Unc-51 like autophagy activating kinase (ULK1/2) are two similar isoforms of an enzyme that in humans are encoded by the ULK1/2 genes. It is specifically a kinase that is involved with autophagy, particularly in response to amino acid withdrawal. Not many studies have been done comparing the two isoforms, but some differences have been recorded.

Application Notes

Optimal dilution of the ULK1 antibody should be determined by the researcher.

Immunogen

Amino acids EETLMEQEHTILRGLRFTLLFVQHVLEIAALK from the human protein were used as the immunogen for the ULK1 antibody.

Storage

After reconstitution, the ULK1 antibody can be stored for up to one month at 4°C. For long-term, aliquot and store at -20°C. Avoid repeated freezing and thawing.

