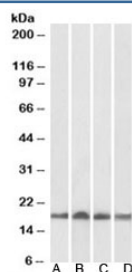


UBE2L3 Antibody (R33772)

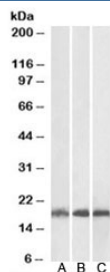
Catalog No.	Formulation	Size
R33772-100UG	0.5 mg/ml in 1X TBS, pH7.3, with 0.5% BSA (US sourced) and 0.02% sodium azide	100 ug

[Bulk quote request](#)

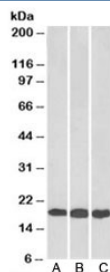
Availability	1-3 business days
Species Reactivity	Human, Mouse, Rat
Predicted Reactivity	Cow
Format	Antigen affinity purified
Clonality	Polyclonal (goat origin)
Isotype	Goat Ig
Purity	Antigen affinity
Gene ID	7332
Localization	Nuclear, cytoplasmic
Applications	Western Blot : 0.1-1ug/ml IF/ICC : 5ug/ml ELISA (peptide) LOD : 1:128000
Limitations	This UBE2L3 antibody is available for research use only.



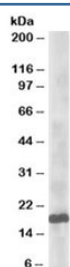
Western blot of human (A), mouse (B), rat (C) and pig (D) heart lysate with UBE2L3 antibody at 0.01ug/ml. Predicted molecular weight: ~18 kDa.



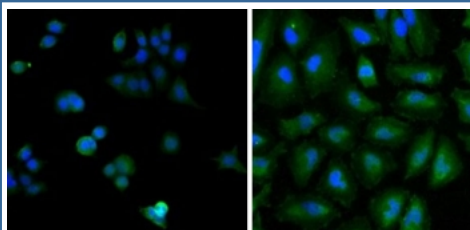
Western blot of human (A), mouse (B) and rat (C) skeletal muscle lysates with UBE2L3 antibody at 0.03ug/ml. Predicted molecular weight: ~18 kDa.



Western blot of HEK293 (A), HepG2 (B) and Jurkat (C) lysates with UBE2L3 antibody at 0.01ug/ml. Predicted molecular weight: ~18 kDa.



Western blot testing of HeLa lysate with UBE2L3 antibody at 0.5ug/ml. Predicted molecular weight: ~18 kDa.



IF/ICC testing of human A) MCF7 and B) HeLa cells with UBE2L3 antibody at 5ug/ml + DAPI nuclear counterstain.

Description

Additional name(s) for this target protein: Ubiquitin-conjugating enzyme E2L 3

Application Notes

Optimal dilution of the UBE2L3 antibody should be determined by the researcher.

Immunogen

Amino acids EFTKKYGEKRPVD were used as the immunogen for this UBE2L3 antibody.

Storage

Aliquot and store the UBE2L3 antibody at -20oC.

