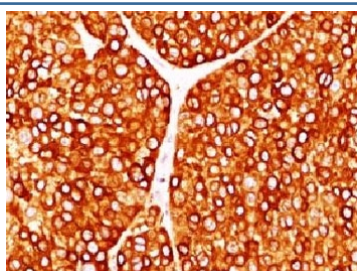


Tyrosinase Antibody [clone TRSN1-1] (V7166)

Catalog No.	Formulation	Size
V7166-100UG	0.2 mg/ml in 1X PBS with 0.1 mg/ml BSA (US sourced) and 0.05% sodium azide	100 ug
V7166-20UG	0.2 mg/ml in 1X PBS with 0.1 mg/ml BSA (US sourced) and 0.05% sodium azide	20 ug
V7166SAF-100UG	1 mg/ml in 1X PBS; BSA free, sodium azide free	100 ug
V7166IHC-7ML	Prediluted in 1X PBS with 0.1 mg/ml BSA (US sourced) and 0.05% sodium azide; *For IHC use only*	7 ml

[Bulk quote request](#)

Availability	1-3 business days
Species Reactivity	Human
Format	Purified
Host	Mouse
Clonality	Monoclonal (mouse origin)
Isotype	Mouse IgG2a, kappa
Clone Name	TRSN1-1
Purity	Protein G affinity chromatography
UniProt	P14679
Localization	Cytoplasmic
Applications	Immunohistochemistry (FFPE) : 1-2ug/ml for 30 min at RT Prediluted IHC Only Format : incubate for 30 min at RT (1)
Limitations	This Tyrosinase antibody is available for research use only.



IHC testing of FFPE human melanoma with Tyrosinase antibody (clone TRSN1-1). Staining of formalin-fixed tissues requires boiling tissue sections in 10mM Tris with 1mM EDTA, pH 9 for 10-20 min followed by cooling at RT for 20 min.

Description

Tyrosinase is an oxidase that is the rate-limiting enzyme for controlling the production of melanin. It is mainly involved in two distinct reactions of melanin synthesis; firstly, the hydroxylation of a monophenol and secondly, the conversion of an o-diphenol to the corresponding o-quinone. o-Quinone undergoes several reactions to eventually form melanin.

Tyrosinase is a copper-containing enzyme present in plant and animal tissues that catalyzes the production of melanin and other pigments from tyrosine by oxidation, as in the blackening of a peeled or sliced potato exposed to air. It is found inside melanosomes which are synthesised in the skin melanocytes. In humans, the tyrosinase enzyme is encoded by the TYR gene. [Wiki]

Application Notes

Titering of the Tyrosinase antibody may be required for optimal performance.

1. The prediluted format is supplied in a dropper bottle and is optimized for use in IHC. After epitope retrieval step (if required), drip mAb solution onto the tissue section and incubate at RT for 30 min.

Immunogen

Recombinant human protein was used as the immunogen for the Tyrosinase antibody.

Storage

Store the Tyrosinase antibody at 2-8°C (with azide) or aliquot and store at -20°C or colder (without azide).