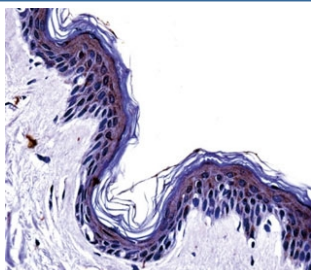


## Tyrosinase Antibody (F50331)

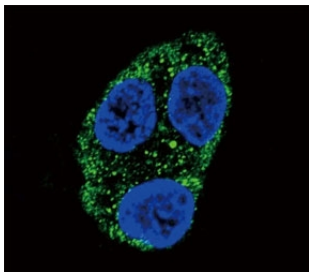
Catalog No.	Formulation	Size
F50331-0.4ML	In 1X PBS, pH 7.4, with 0.09% sodium azide	0.4 ml
F50331-0.08ML	In 1X PBS, pH 7.4, with 0.09% sodium azide	0.08 ml

[Bulk quote request](#)

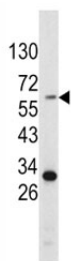
<b>Availability</b>	1-3 business days
<b>Species Reactivity</b>	Human
<b>Format</b>	Purified
<b>Host</b>	Rabbit
<b>Clonality</b>	Polyclonal (rabbit origin)
<b>Isotype</b>	Rabbit Ig
<b>Purity</b>	Purified
<b>UniProt</b>	P14679
<b>Applications</b>	Western Blot : 1:1000 IHC (Paraffin) : 1:10-1:50 Immunofluorescence : 1:10-1:50 Flow Cytometry : 1:10-1:50
<b>Limitations</b>	This Tyrosinase antibody is available for research use only.



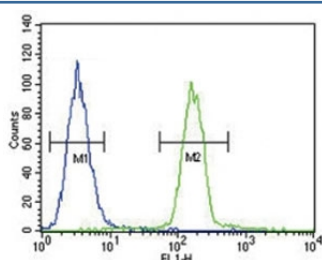
Tyrosinase antibody immunohistochemistry analysis in formalin fixed and paraffin embedded human skin tissue.



Confocal immunofluorescent analysis of Tyrosinase antibody with HepG2 cells followed by Alexa Fluor 488-conjugated goat anti-rabbit IgG (green). DAPI was used as a nuclear counterstain (blue).



Western blot analysis of Tyrosinase antibody and HepG2 lysate.



Tyrosinase antibody flow cytometric analysis of A375 cells (green) compared to a [negative control](#) (left blue). FITC-conjugated goat-anti-rabbit secondary Ab was used for the analysis.

## Description

TYR catalyzes the first 2 steps, and at least 1 subsequent step, in the conversion of tyrosine to melanin. The protein has both tyrosine hydroxylase and dopa oxidase catalytic activities, and requires copper for function. Mutations in this protein result in oculocutaneous albinism, and nonpathologic polymorphisms result in skin pigmentation variation.

## Application Notes

Titration of the Tyrosinase antibody may be required due to differences in protocols and secondary/substrate sensitivity.

## Immunogen

A portion of amino acids 486-513 from the human protein was used as the immunogen for this Tyrosinase antibody.

## Storage

Aliquot the Tyrosinase antibody and store frozen at -20°C or colder. Avoid repeated freeze-thaw cycles.