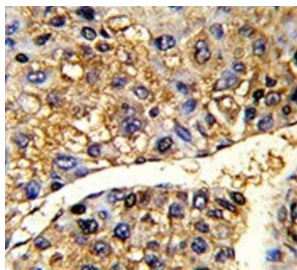


## TUFM Antibody (F54793)

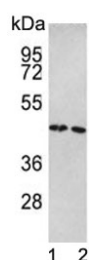
Catalog No.	Formulation	Size
F54793-0.4ML	In 1X PBS, pH 7.4, with 0.09% sodium azide	0.4 ml
F54793-0.08ML	In 1X PBS, pH 7.4, with 0.09% sodium azide	0.08 ml

[Bulk quote request](#)

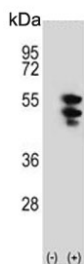
<b>Availability</b>	1-3 business days
<b>Species Reactivity</b>	Human
<b>Format</b>	Purified
<b>Clonality</b>	Polyclonal (rabbit origin)
<b>Isotype</b>	Rabbit Ig
<b>Purity</b>	Purified
<b>UniProt</b>	P49411
<b>Localization</b>	Cytoplasmic
<b>Applications</b>	Western Blot : 1:500-1:1000 Flow Cytometry : 1:10-1:50 (1x10e6 cells) Immunohistochemistry (FFPE) : 1:50-1:100
<b>Limitations</b>	This TUFM antibody is available for research use only.



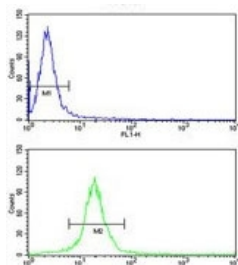
IHC testing of FFPE human hepatocellular carcinoma tissue with TUFM antibody. HIER: steam section in pH6 citrate buffer for 20 min and allow to cool prior to staining.



Western blot testing of human 1) Ramos and 2) HeLa cell lysate with TUFM antibody. Expected molecular weight: 43-46 kDa.



Western blot testing of 1) non-transfected and 2) transfected 293 cell lysate with TUFM antibody.



Flow cytometry testing of human HeLa cells with TUFM antibody; Blue=isotype control, Green= TUFM antibody.

## Description

TUFM is a protein which participates in protein translation in mitochondria. This protein promotes the GTP-dependent binding of aminoacyl-tRNA to the A-site of ribosomes during protein biosynthesis.

## Application Notes

The stated application concentrations are suggested starting points. Titration of the TUFM antibody may be required due to differences in protocols and secondary/substrate sensitivity.

## Immunogen

A portion of amino acids 75-104 from the human protein was used as the immunogen for the TUFM antibody.

## Storage

Aliquot the TUFM antibody and store frozen at -20oC or colder. Avoid repeated freeze-thaw cycles.