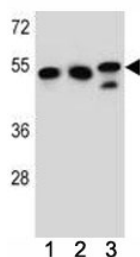


## TUBB6 Antibody (Tubulin beta 6) (F41790)

Catalog No.	Formulation	Size
F41790-0.4ML	In 1X PBS, pH 7.4, with 0.09% sodium azide	0.4 ml
F41790-0.08ML	In 1X PBS, pH 7.4, with 0.09% sodium azide	0.08 ml

[Bulk quote request](#)

<b>Availability</b>	1-3 business days
<b>Species Reactivity</b>	Human
<b>Predicted Reactivity</b>	Bovine, Mouse, Primate
<b>Format</b>	Antigen affinity purified
<b>Clonality</b>	Polyclonal (rabbit origin)
<b>Isotype</b>	Rabbit Ig
<b>Purity</b>	Antigen affinity
<b>UniProt</b>	Q9BUF5
<b>Applications</b>	Western Blot : 1:1000
<b>Limitations</b>	This TUBB6 antibody is available for research use only.



TUBB6 antibody western blot analysis in K562, HeLa, MDA-MB231 lysate.

### Description

Tubulin is the major constituent of microtubules. It binds two moles of GTP, one at an exchangeable site on the beta chain and one at a non-exchangeable site on the alpha-chain (By similarity).

### Application Notes

Titration of the TUBB6 antibody may be required due to differences in protocols and secondary/substrate sensitivity.

## Immunogen

A portion of amino acids 139-166 from the human protein was used as the immunogen for this TUBB6 antibody.

## Storage

Aliquot the TUBB6 antibody and store frozen at -20oC or colder. Avoid repeated freeze-thaw cycles.