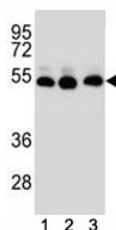


TUBB2B Antibody / Tubulin beta 2B (F41797)

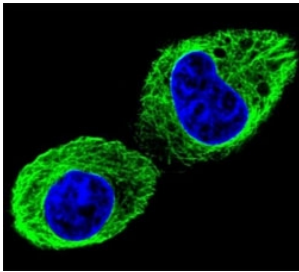
Catalog No.	Formulation	Size
F41797-0.4ML	In 1X PBS, pH 7.4, with 0.09% sodium azide	0.4 ml
F41797-0.08ML	In 1X PBS, pH 7.4, with 0.09% sodium azide	0.08 ml

[Bulk quote request](#)

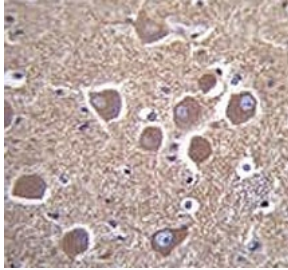
Availability	1-3 business days
Species Reactivity	Human
Predicted Reactivity	Mouse, Rat, Bovine, Pig, Primate, Chicken, Xenopus
Format	Antigen affinity purified
Host	Rabbit
Clonality	Polyclonal (rabbit origin)
Isotype	Rabbit Ig
Purity	Antigen affinity
UniProt	Q9BVA1
Applications	Immunofluorescence : 1:10-1:50 Western Blot : 1:1000 IHC (Paraffin) : 1:10-1:50
Limitations	This TUBB2B antibody is available for research use only.



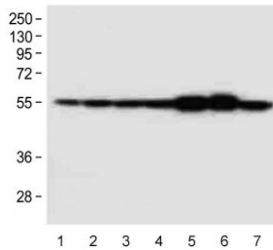
TUBB2B antibody western blot analysis of (1) human HepG2, (2) human HeLa, (3) human MDA-MB-231 cell lysate.



Confocal immunofluorescent analysis of TUBB2B antibody with HepG2 cells followed by Alexa Fluor 488-conjugated goat anti-rabbit IgG (green). DAPI was used as a nuclear counterstain (blue).



TUBB2B antibody immunohistochemistry analysis in formalin fixed and paraffin embedded human brain tissue.



Western blot testing of 1) human HeLa, 2) human HepG2, 3) human MDA-MB-231, 4) human K562, 5) mouse brain, 6) mouse cerebellum and 7) rat PC-12 cell lysate with TUBB2B antibody.

Description

The protein encoded by this gene is a beta isoform of tubulin, which binds GTP and is a major component of microtubules. This gene is highly similar to TUBB2A and TUBB2C. Defects in this gene are a cause of asymmetric polymicrogyria. [provided by RefSeq].

Application Notes

Titration of the TUBB2B antibody may be required due to differences in protocols and secondary/substrate sensitivity.

Immunogen

A portion of amino acids 12-39 from the human protein was used as the immunogen for this TUBB2B antibody.

Storage

Aliquot the TUBB2B antibody and store frozen at -20oC or colder. Avoid repeated freeze-thaw cycles.