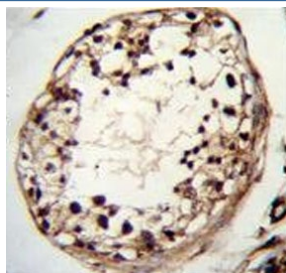


## TSPYL6 Antibody (F54591)

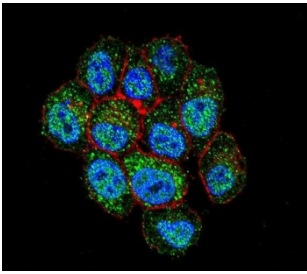
Catalog No.	Formulation	Size
F54591-0.4ML	In 1X PBS, pH 7.4, with 0.09% sodium azide	0.4 ml
F54591-0.08ML	In 1X PBS, pH 7.4, with 0.09% sodium azide	0.08 ml

[Bulk quote request](#)

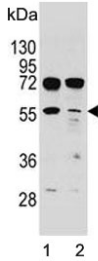
<b>Availability</b>	1-3 business days
<b>Species Reactivity</b>	Human
<b>Format</b>	Purified
<b>Host</b>	Rabbit
<b>Clonality</b>	Polyclonal (rabbit origin)
<b>Isotype</b>	Rabbit Ig
<b>Purity</b>	Antigen affinity purified
<b>UniProt</b>	Q8N831
<b>Localization</b>	Nuclear
<b>Applications</b>	Western Blot : 1:500-1:2000 Immunofluorescence : 1:25 Flow Cytometry : 1:25 (1x10e6 cells) Immunohistochemistry (FFPE) : 1:25
<b>Limitations</b>	This TSPYL6 antibody is available for research use only.



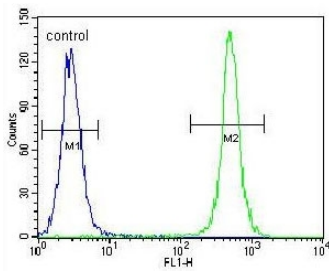
IHC testing of FFPE human testis tissue with TSPYL6 antibody. HIER: steam section in pH6 citrate buffer for 20 min and allow to cool prior to staining.



Immunofluorescent staining of human HeLa cells with TSPYL6 antibody (green), DAPI nuclear stain (blue) and anti-Actin (red).



Western blot testing of human 1) NCI-H460 and 2) HeLa cell lysate with TSPYL6 antibody. Predicted molecular weight ~46 kDa.



Flow cytometry testing of human HeLa cells with TSPYL6 antibody; Blue=isotype control, Green= TSPYL6 antibody.

## Description

Alternate names: Testis-specific Y-encoded-like protein 6; TSPY-like protein 6

## Application Notes

The stated application concentrations are suggested starting points. Titration of the TSPYL6 antibody may be required due to differences in protocols and secondary/substrate sensitivity.

## Immunogen

A portion of amino acids 206-235 from the human protein was used as the immunogen for the TSPYL6 antibody.

## Storage

Aliquot the TSPYL6 antibody and store frozen at -20°C or colder. Avoid repeated freeze-thaw cycles.