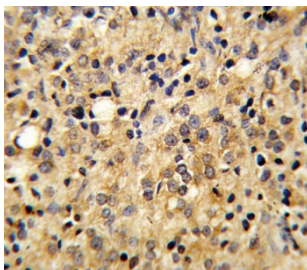


TSP5 Antibody / COMP (F54435)

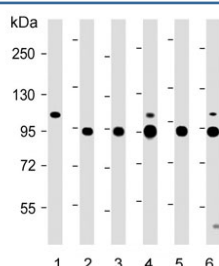
Catalog No.	Formulation	Size
F54435-0.4ML	In 1X PBS, pH 7.4, with 0.09% sodium azide	0.4 ml
F54435-0.08ML	In 1X PBS, pH 7.4, with 0.09% sodium azide	0.08 ml

Bulk quote request

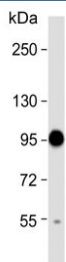
Availability	1-3 business days
Species Reactivity	Human
Format	Purified
Clonality	Polyclonal (rabbit origin)
Isotype	Rabbit Ig
Purity	Antigen affinity purified
UniProt	P49747
Localization	Secreted
Applications	Immunohistochemistry (FFPE) : 1:25 Western Blot : 1:500-1:2000 Flow Cytometry : 1:25 (1x10 ⁶ cells)
Limitations	This TSP5 antibody is available for research use only.



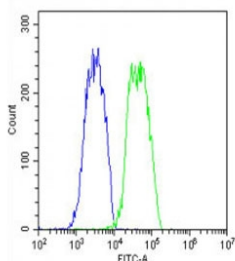
IHC testing of FFPE human prostate carcinoma tissue with TSP5 antibody. HIER: steam section in pH6 citrate buffer for 20 min and allow to cool prior to staining.



Western blot testing of 1) human skeletal muscle, 2) mouse ATDC5, 3) HUVEC, 4) human Jurkat, 5) human MG-63 and 6) human U-2 OS lysate with TSP5 antibody. Expected molecular weight: 83-100 kDa depending on glycosylation level.



Western blot testing of rat skeletal muscle lysate with TSP5 antibody. Expected molecular weight: 83-100 kDa depending on glycosylation level.



Flow cytometry testing of fixed and permeabilized human HepG2 cells with TSP5 antibody; Blue=isotype control, Green= TSP5 antibody.

Description

COMP/TSP5 is a noncollagenous extracellular matrix (ECM) protein. It consists of five identical glycoprotein subunits, each with EGF-like and calcium-binding (thrombospondin-like) domains. Oligomerization results from formation of a five-stranded coiled coil and disulfides. Binding to other ECM proteins such as collagen appears to depend on divalent cations.

Application Notes

The stated application concentrations are suggested starting points. Titration of the TSP5 antibody may be required due to differences in protocols and secondary/substrate sensitivity.

Immunogen

A portion of amino acids 314-343 from the human protein was used as the immunogen for the TSP5 antibody.

Storage

Aliquot the TSP5 antibody and store frozen at -20°C or colder. Avoid repeated freeze-thaw cycles.