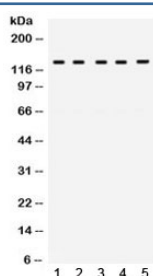


TRPM8 Antibody (R32272)

Catalog No.	Formulation	Size
R32272	0.5mg/ml if reconstituted with 0.2ml sterile DI water	100 ug

[Bulk quote request](#)

Availability	1-3 business days
Species Reactivity	Human
Format	Antigen affinity purified
Host	Rabbit
Clonality	Polyclonal (rabbit origin)
Isotype	Rabbit IgG
Purity	Antigen affinity
Buffer	Lyophilized from 1X PBS with 2.5% BSA and 0.025% sodium azide
UniProt	Q7Z2W7
Applications	Western Blot : 0.1-0.5ug/ml
Limitations	This TRPM8 antibody is available for research use only.



Western blot testing of human 1) HeLa, 2) 22RV1, 3) SW620, 4) A549 and 6) A431 cell lysate with TRPM8 antibody. Expected/observed molecular weight ~128 kDa.

Description

Transient receptor potential cation channel subfamily M member 8, also known as the cold and menthol receptor 1 (CMR1), is a protein that in humans is encoded by the TRPM8 gene. TRPM8 is an ion channel, upon activation it allows the entry of Na⁺ (sodium) and Ca²⁺ (calcium) ions to the cell that leads to depolarization and the generation of an action potential. The signal is conducted from primary afferents (type C- and A-delta) eventually leading to the sensation of cold and cold pain. The TRPM8 protein is expressed in sensory neurons, and it is activated by cold temperatures and cooling agents, such as menthol and icilin whereas WS-12 and CPS-369 are the most selective agonist of TRPM8.

Application Notes

Optimal dilution of the TRPM8 antibody should be determined by the researcher.

Immunogen

Amino acids NTKANDTSEEMRHRFRQLDTKLNDLKGLLKEIANKIK of human TRPM8 were used as the immunogen for the TRPM8 antibody.

Storage

After reconstitution, the TRPM8 antibody can be stored for up to one month at 4oC. For long-term, aliquot and store at -20oC. Avoid repeated freezing and thawing.