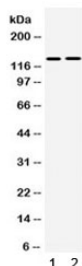


TRPM5 Antibody (R32340)

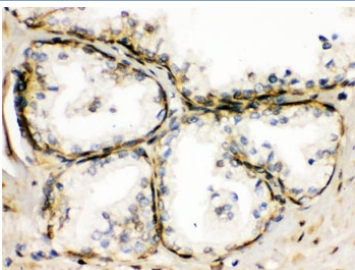
Catalog No.	Formulation	Size
R32340	0.5mg/ml if reconstituted with 0.2ml sterile DI water	100 ug

[Bulk quote request](#)

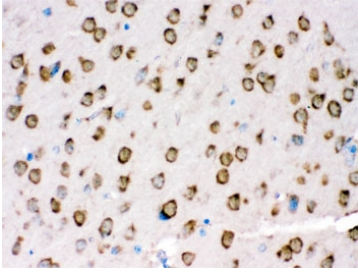
Availability	1-3 business days
Species Reactivity	Human, Mouse, Rat
Format	Antigen affinity purified
Host	Rabbit
Clonality	Polyclonal (rabbit origin)
Isotype	Rabbit IgG
Purity	Antigen affinity
Buffer	Lyophilized from 1X PBS with 2.5% BSA and 0.025% sodium azide
UniProt	Q9NZQ8
Localization	Cytoplasmic, membranous
Applications	Western Blot : 0.1-0.5ug/ml Immunohistochemistry (FFPE) : 0.5-1ug/ml
Limitations	This TRPM5 antibody is available for research use only.



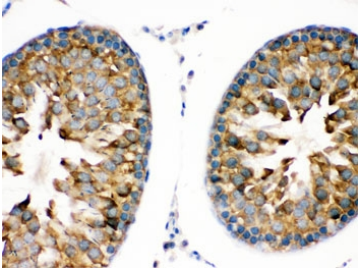
Western blot testing of human 1) SMMC and 2) 293 cell lysate with TRPM5 antibody. Expected/observed molecular weight ~131 kDa.



IHC testing of FFPE human prostate cancer tissue with TRPM5 antibody. HIER: Boil the paraffin sections in pH 6, 10mM citrate buffer for 20 minutes and allow to cool prior to staining.



IHC testing of FFPE mouse brain with TRPM5 antibody. HIER: Boil the paraffin sections in pH 6, 10mM citrate buffer for 20 minutes and allow to cool prior to staining.



IHC testing of FFPE rat testis with TRPM5 antibody. HIER: Boil the paraffin sections in pH 6, 10mM citrate buffer for 20 minutes and allow to cool prior to staining.

Description

Transient receptor potential cation channel subfamily M member 5 (TRPM5) is a protein that in humans is encoded by the TRPM5 gene. This gene encodes a member of the transient receptor potential (TRP) protein family, which is a diverse group of proteins with structural features typical of ion channels. This protein plays an important role in taste transduction, and has characteristics of a calcium-activated, non-selective cation channel that carries Na⁺, K⁺, and Cs⁺ ions equally well, but not Ca²⁺ ions. It is activated by lower concentrations of intracellular Ca²⁺, and inhibited by higher concentrations. It is also a highly temperature-sensitive, heat activated channel showing a steep increase of inward currents at temperatures between 15 and 35 degrees Celsius. This gene is located within the Beckwith-Wiedemann syndrome critical region-1 on chromosome 11p15.5, and has been shown to be imprinted, with exclusive expression from the paternal allele.

Application Notes

Optimal dilution of the TRPM5 antibody should be determined by the researcher.

Immunogen

Amino acids 1021-1108 of human TRPM5 were used as the immunogen for the TRPM5 antibody.

Storage

After reconstitution, the TRPM5 antibody can be stored for up to one month at 4°C. For long-term, aliquot and store at -20°C. Avoid repeated freezing and thawing.