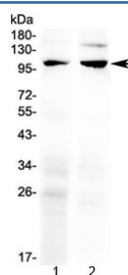


## TRPC6 Antibody (R32851)

Catalog No.	Formulation	Size
R32851	0.5mg/ml if reconstituted with 0.2ml sterile DI water	100 ug

**Bulk quote request**

<b>Availability</b>	1-3 business days
<b>Species Reactivity</b>	Mouse, Rat
<b>Predicted Reactivity</b>	Human
<b>Format</b>	Antigen affinity purified
<b>Host</b>	Rabbit
<b>Clonality</b>	Polyclonal (rabbit origin)
<b>Isotype</b>	Rabbit IgG
<b>Purity</b>	Antigen affinity
<b>Buffer</b>	Lyophilized from 1X PBS with 2.5% BSA, 0.025% sodium azide
<b>UniProt</b>	Q9Y210
<b>Applications</b>	Western Blot : 0.5-1ug/ml
<b>Limitations</b>	This TRPC6 antibody is available for research use only.



Western blot testing of 1) rat ovary and 2) rat lung lysate with TRPC6 antibody at 0.5ug/ml. Predicted molecular weight ~106 kDa.

## Description

Transient receptor potential cation channel, subfamily C, member 6, also known as TRPC6, is a human gene encoding a protein of the same name. The protein encoded by this gene forms a receptor-activated calcium channel in the cell membrane. The channel is activated by diacylglycerol and is thought to be under the control of a phosphatidylinositol second messenger system. Activation of this channel occurs independently of protein kinase C and is not triggered by low levels of intracellular calcium. Defects in this gene are a cause of focal segmental glomerulosclerosis 2 (FSGS2).

## Application Notes

Optimal dilution of the TRPC6 antibody should be determined by the researcher.

## Immunogen

A recombinant human protein corresponding to amino acids K771-E875 was used as the immunogen for the TRPC6 antibody.

## Storage

After reconstitution, the TRPC6 antibody can be stored for up to one month at 4°C. For long-term, aliquot and store at -20°C. Avoid repeated freezing and thawing.