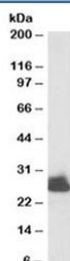


## Triosephosphate isomerase Antibody (R34724)

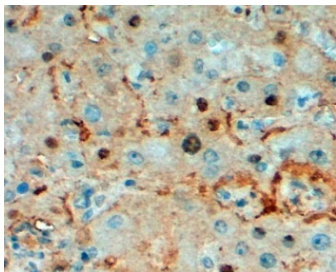
Catalog No.	Formulation	Size
R34724-100UG	0.5 mg/ml in 1X TBS, pH7.3, with 0.5% BSA (US sourced) and 0.02% sodium azide	100 ug

[Bulk quote request](#)

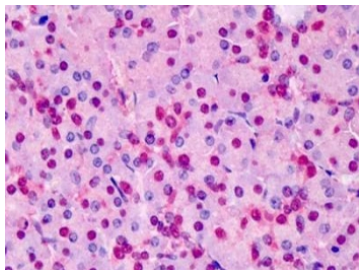
Availability	1-3 business days
Species Reactivity	Human, Mouse
Predicted Reactivity	Cow, Dog, Rat
Format	Antigen affinity purified
Clonality	Polyclonal (goat origin)
Isotype	Goat Ig
Purity	Antigen affinity
Gene ID	7167
Localization	Nuclear, cytoplasmic
Applications	Western Blot : 0.01-0.03ug/ml Immunohistochemistry (FFPE) : 2-5ug/ml ELISA (peptide) LOD : 1:16000
Limitations	This Triosephosphate isomerase antibody is available for research use only.



Western blot testing of human liver lysate with Triosephosphate isomerase antibody at 0.003ug/ml. Predicted molecular weight: ~26 kDa.



IHC staining of FFPE human liver at 2ug/ml. HIER: steamed with pH9 Tris/EDTA buffer, HRP-staining.



IHC staining of FFPE human pancreas tissue with Triosephosphate isomerase antibody at 5ug/ml. HIER: steamed with pH6 citrate buffer, AP-staining.

## Description

Additional name(s) for this target protein: TPI1

## Application Notes

Optimal dilution of the Triosephosphate isomerase antibody should be determined by the researcher.

## Immunogen

Amino acids LKPEFVDIINAKQ were used as the immunogen for this Triosephosphate isomerase antibody.

## Storage

Aliquot and store the Triosephosphate isomerase antibody at -20oC.