

TREM1 Antibody (R32921)

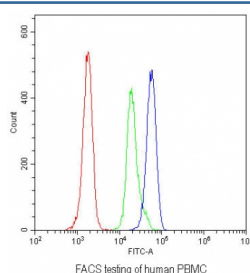
Catalog No.	Formulation	Size
R32921	0.5mg/ml if reconstituted with 0.2ml sterile DI water	100 ug

Bulk quote request

Availability	1-3 business days
Species Reactivity	Human
Format	Antigen affinity purified
Host	Rabbit
Clonality	Polyclonal (rabbit origin)
Isotype	Rabbit IgG
Purity	Antigen affinity
Buffer	Lyophilized from 1X PBS with 2.5% BSA and 0.025% sodium azide
UniProt	Q9NP99
Applications	Western Blot : 0.5-1ug/ml Flow Cytometry : 1-3ug/10 ⁶ cells
Limitations	This TREM1 antibody is available for research use only.

kDa
200 —
116 —
97 —
66 —
44 —
31 —
22 —
14 —
6 —

Western blot testing of 1ng of recombinant human protein with TREM1 antibody at 0.5ug/ml.



Flow cytometry testing of human PBMC with TREM1 antibody at 1ug/10⁶ cells (blocked with goat sera); Red=cells alone, Green=isotype control, Blue= TREM1 antibody.

Description

Trem1, Triggering receptor expressed on myeloid cells-1, is encoded by TREM1 gene. The expression of Trem1 is in monocytes and neutrophils but not in lymphocytes, dendritic cells, or other cell types. Trem1 is a 30-kD glycoprotein that is reduced to 26 kD by deglycosylation, in agreement with the predicted molecular mass. The Trem1 gene which contains 4 exons maps to chromosome 6p21.1, within a TREM gene cluster and the mouse Trem1 gene maps to chromosome 17 in a region that shows homology of synteny to human chromosome 6. The expression of Trem1 is upregulated by stimulation with lipopolysaccharide (LPS), gram-negative bacteria, and fungi. Cross-linking of Trem1 on neutrophils induces interleukin-8 (IL8) and myeloperoxidase secretion, while cross-linking on monocytes induces not only secretion of IL8 but also of monocyte chemotactic protein-1 (MCP1, or SCYA2) and tumor necrosis factor (TNF); MCP1 and TNF secretion could be further upregulated by LPS-mediated priming. Trem1 engagement also induces upregulation of adhesion molecules (e.g., ITGB1) and costimulatory molecules (e.g., CD40). Trem1 is associated with DAP12 (TYROBP), a molecule frequently associated with activating receptors.

Application Notes

Optimal dilution of the TREM1 antibody should be determined by the researcher.

Immunogen

A recombinant human protein corresponding to amino acids A21-R200 was used as the immunogen for the TREM1 antibody.

Storage

After reconstitution, the TREM1 antibody can be stored for up to one month at 4°C. For long-term, aliquot and store at -20°C. Avoid repeated freezing and thawing.