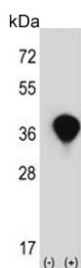


Transaldolase Antibody / TALDO1 (F54871)

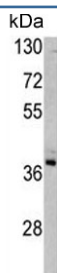
Catalog No.	Formulation	Size
F54871-0.4ML	In 1X PBS, pH 7.4, with 0.09% sodium azide	0.4 ml
F54871-0.08ML	In 1X PBS, pH 7.4, with 0.09% sodium azide	0.08 ml

[Bulk quote request](#)

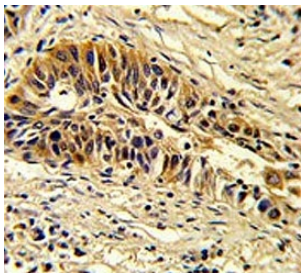
Availability	1-3 business days
Species Reactivity	Human
Format	Purified
Clonality	Polyclonal (rabbit origin)
Isotype	Rabbit Ig
Purity	Purified
UniProt	P37837
Localization	Cytoplasmic
Applications	Western Blot : 1:500-1:1000 Flow Cytometry : 1:10-1:50 (1x10 ⁶ cells) Immunohistochemistry (FFPE) : 1:50-1:100
Limitations	This Transaldolase antibody is available for research use only.



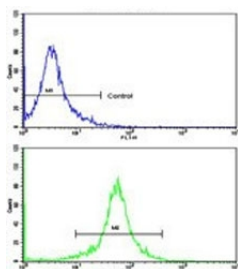
Western blot testing of 1) non-transfected and 2) transfected 293 cell lysate with Transaldolase antibody.



Western blot testing of human A375 cell lysate with Transaldolase antibody. Predicted molecular weight ~38 kDa.



IHC testing of FFPE human lung carcinoma tissue with Transaldolase antibody. HIER: steam section in pH6 citrate buffer for 20 min and allow to cool prior to staining.



Flow cytometry testing of human K562 cells with Transaldolase antibody; Blue=isotype control, Green= Transaldolase antibody.

Description

Transaldolase 1 is a key enzyme of the nonoxidative pentose phosphate pathway providing ribose-5-phosphate for nucleic acid synthesis and NADPH for lipid biosynthesis. This pathway can also maintain glutathione at a reduced state and thus protect sulfhydryl groups and cellular integrity from oxygen radicals.

Application Notes

The stated application concentrations are suggested starting points. Titration of the Transaldolase antibody may be required due to differences in protocols and secondary/substrate sensitivity.

Immunogen

A portion of amino acids 186-215 from the human protein was used as the immunogen for the Transaldolase antibody.

Storage

Aliquot the Transaldolase antibody and store frozen at -20oC or colder. Avoid repeated freeze-thaw cycles.