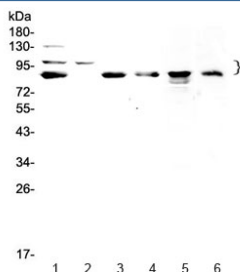


## TPX2 Antibody (RQ4199)

Catalog No.	Formulation	Size
RQ4199	0.5mg/ml if reconstituted with 0.2ml sterile DI water	100 ug

[Bulk quote request](#)

<b>Availability</b>	1-3 business days
<b>Species Reactivity</b>	Human, Mouse, Rat
<b>Format</b>	Antigen affinity purified
<b>Host</b>	Rabbit
<b>Clonality</b>	Polyclonal (rabbit origin)
<b>Isotype</b>	Rabbit IgG
<b>Purity</b>	Antigen affinity purified
<b>Buffer</b>	Lyophilized from 1X PBS with 2% Trehalose and 0.025% sodium azide
<b>UniProt</b>	Q9ULW0
<b>Applications</b>	Western Blot : 0.5-1ug/ml Direct ELISA : 0.1-0.5ug/ml
<b>Limitations</b>	This TPX2 antibody is available for research use only.



Western blot testing of human 1) HeLa, 2) COLO320, 3) U-87 MG, 4) SGC-7901, 5) rat PC-12 and 6) mouse HEPA1-6 lysate with TPX2 antibody at 0.5ug/ml. Predicted molecular weight ~86 kDa, observed at ~100 kDa.

## Description

Targeting protein for Xklp2, also known as C20ORF1, is a protein that in humans is encoded by the TPX2 gene. It is mapped to chromosome 20q11.2. It was concluded that even in the presence of duplicated centrosomes, spindle formation requires the function of TPX2 to generate a stable bipolar spindle with overlapping antiparallel microtubule arrays. At the onset of mitosis, GOLGA2 interacts with importin-alpha, liberating TPX2 from importin-alpha, allowing TPX2 to activate AURKA kinase and stimulate local microtubule nucleation.

## Application Notes

Optimal dilution of the TPX2 antibody should be determined by the researcher.

## Immunogen

A recombinant human protein corresponding to amino acids D15-Q93 was used as the immunogen for the TPX2 antibody.

## Storage

After reconstitution, the TPX2 antibody can be stored for up to one month at 4°C. For long-term, aliquot and store at -20°C. Avoid repeated freezing and thawing.