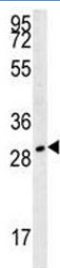


## TPSAB1 Antibody (F40073)

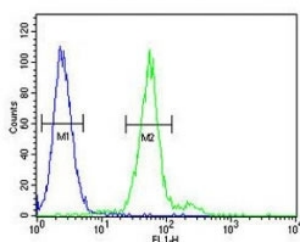
Catalog No.	Formulation	Size
F40073-0.4ML	In 1X PBS, pH 7.4, with 0.09% sodium azide	0.4 ml
F40073-0.08ML	In 1X PBS, pH 7.4, with 0.09% sodium azide	0.08 ml

**Bulk quote request**

<b>Availability</b>	1-3 business days
<b>Species Reactivity</b>	Human
<b>Format</b>	Antigen affinity purified
<b>Clonality</b>	Polyclonal (rabbit origin)
<b>Isotype</b>	Rabbit Ig
<b>Purity</b>	Antigen affinity
<b>UniProt</b>	Q15661
<b>Applications</b>	Western Blot : 1:1000 Flow Cytometry : 1:10-1:50
<b>Limitations</b>	This TPSAB1 antibody is available for research use only.



TPSAB1 antibody western blot analysis in 293 lysate.



TPSAB1 antibody flow cytometric analysis of 293 cells (green) compared to a negative control cell (blue). FITC-conjugated goat-anti-rabbit secondary Ab was used for the analysis.

## Description

Tryptases comprise a family of trypsin-like serine proteases, the peptidase family S1. Tryptases are enzymatically active only as heparin-stabilized tetramers, and they are resistant to all known endogenous proteinase inhibitors. Several tryptase genes are clustered on chromosome 16p13.3. These genes are characterized by several distinct features. They have a highly conserved 3' UTR and contain tandem repeat sequences at the 5' flank and 3' UTR which are thought to play a role in regulation of the mRNA stability. These genes have an intron immediately upstream of the initiator Met codon, which separates the site of transcription initiation from protein coding sequence. This feature is characteristic of tryptases but is unusual in other genes. The alleles of this gene exhibit an unusual amount of sequence variation, such that the alleles were once thought to represent two separate genes, alpha and beta 1. Beta tryptases appear to be the main isoenzymes expressed in mast cells; whereas in basophils, alpha tryptases predominate. Tryptases have been implicated as mediators in the pathogenesis of asthma and other allergic and inflammatory disorders.

## Application Notes

Titration of the TPSAB1 antibody may be required due to differences in protocols and secondary/substrate sensitivity.

## Immunogen

A portion of amino acids 61-87 from the human protein was used as the immunogen for this TPSAB1 antibody.

## Storage

Aliquot the TPSAB1 antibody and store frozen at -20oC or colder. Avoid repeated freeze-thaw cycles.