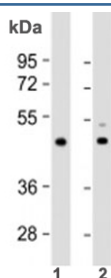


## TPRA1 Antibody / TMEM227 (F53892)

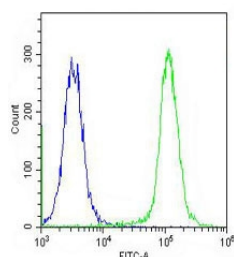
Catalog No.	Formulation	Size
F53892-0.2ML	In 1X PBS, pH 7.4, with 0.09% sodium azide	0.2 ml
F53892-0.05ML	In 1X PBS, pH 7.4, with 0.09% sodium azide	0.05 ml

**Bulk quote request**

<b>Availability</b>	1-3 business days
<b>Species Reactivity</b>	Human, Mouse
<b>Format</b>	Antigen affinity purified
<b>Clonality</b>	Polyclonal (rabbit origin)
<b>Isotype</b>	Rabbit Ig
<b>Purity</b>	Antigen affinity
<b>UniProt</b>	Q86W33
<b>Applications</b>	Western Blot : 1:1000-2000 Flow Cytometry : 1:25-1:50
<b>Limitations</b>	This TPRA1 antibody is available for research use only.



Western blot testing of 1) human heart lysate and 2) mouse heart lysate with TPRA1 antibody at 1:2000. Predicted molecular weight: 41 kDa.



Flow cytometry testing of fixed and permeabilized human U-2 OS cells with TPRA1 antibody; Blue=isotype control, Green= TPRA1 antibody.

## Description

Alternate names: Transmembrane protein adipocyte-associated 1; Integral membrane protein GPR175; Transmembrane protein 227 (TMEM227)

## Application Notes

Titration of the TPRA1 antibody may be required due to differences in protocols and secondary/substrate sensitivity.

## Immunogen

A portion of amino acids 16-47 from the human protein was used as the immunogen for the TPRA1 antibody.

## Storage

Aliquot the TPRA1 antibody and store frozen at -20oC or colder. Avoid repeated freeze-thaw cycles.