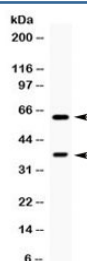


TPP1 Antibody (R31801)

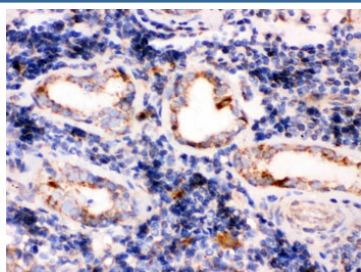
Catalog No.	Formulation	Size
R31801	0.5mg/ml if reconstituted with 0.2ml sterile DI water	100 ug

Bulk quote request

Availability	1-3 business days
Species Reactivity	Human
Format	Antigen affinity purified
Host	Rabbit
Clonality	Polyclonal (rabbit origin)
Isotype	Rabbit IgG
Purity	Antigen affinity
Buffer	Lyophilized from 1X PBS with 2.5% BSA and 0.025% sodium azide
UniProt	O14773
Localization	Cytoplasmic, membranous
Applications	Western Blot : 0.1-0.5ug/ml Immunohistochemistry (FFPE) : 0.5-1ug/ml
Limitations	This TPP1 antibody is available for research use only.



Western blot testing of human HeLa cell lysate with TPP1 antibody. Expected molecular weight: 61/34 kDa (isoforms 1/2).



IHC testing of FFPE human lung cancer tissue with TPP1 antibody. HIER: Boil the paraffin sections in pH 6, 10mM citrate buffer for 20 minutes and allow to cool prior to staining.

Description

Tripeptidyl-peptidase 1, also known as Lysosomal pepstatin-insensitive protease, is an enzyme that in humans is encoded by the TPP1 gene. This gene encodes a member of the sedolisin family of serine proteases. The protease functions in the lysosome to cleave N-terminal tripeptides from substrates, and has weaker endopeptidase activity. It is synthesized as a catalytically-inactive enzyme which is activated and auto-proteolyzed upon acidification. Mutations in this gene result in late-infantile neuronal ceroid lipofuscinosis, which is associated with the failure to degrade specific neuropeptides and a subunit of ATP synthase in the lysosome.

Application Notes

Optimal dilution of the TPP1 antibody should be determined by the researcher.

Immunogen

Amino acids CAQFLEQYFHDSDLAQFMRLFGGNFAHQASVARVV of human TPP1 were used as the immunogen for the TPP1 antibody.

Storage

After reconstitution, the TPP1 antibody can be stored for up to one month at 4oC. For long-term, aliquot and store at -20oC. Avoid repeated freezing and thawing.