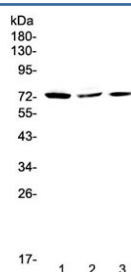


TORC2 Antibody / CRTC2 (RQ4279)

Catalog No.	Formulation	Size
RQ4279	0.5mg/ml if reconstituted with 0.2ml sterile DI water	100 ug

[Bulk quote request](#)

Availability	1-3 business days
Species Reactivity	Human
Format	Antigen affinity purified
Host	Rabbit
Clonality	Polyclonal (rabbit origin)
Isotype	Rabbit IgG
Purity	Antigen affinity purified
Buffer	Lyophilized from 1X PBS with 2% Trehalose and 0.025% sodium azide
UniProt	Q53ET0
Localization	Cytoplasm
Applications	Western Blot : 0.5-1ug/ml
Limitations	This TORC2 antibody is available for research use only.



Western blot testing of human 1) HeLa, 2) MCF7 and 3) A375 cell lysate with TORC2 antibody at 0.5ug/ml. Predicted molecular weight ~73 kDa.

Description

TORC2 (Transducer of CREB protein 2), also known as CRTC2, is a protein which in humans is encoded by the CRTC2 gene. This gene encodes a member of the transducers of regulated cAMP response element-binding protein activity family of transcription coactivators. These proteins promote the transcription of genes targeted by the cAMP response element-binding protein, and therefore play an important role in many cellular processes. Under basal conditions the encoded protein is phosphorylated by AMP-activated protein kinase or the salt-inducible kinases and is sequestered in

the cytoplasm. Upon activation by elevated cAMP or calcium, the encoded protein translocates to the nucleus and increases target gene expression. Single nucleotide polymorphisms in this gene may increase the risk of type 2 diabetes. A pseudogene of this gene is located on the long arm of chromosome 5.

Application Notes

Optimal dilution of the TORC2 antibody should be determined by the researcher.

Immunogen

Amino acids EKIALQKQRQAEETAAFEEVMMDIGSTRLQAQKLRLAYTR were used as the immunogen for the TORC2 antibody.

Storage

After reconstitution, the TORC2 antibody can be stored for up to one month at 4°C. For long-term, aliquot and store at -20°C. Avoid repeated freezing and thawing.