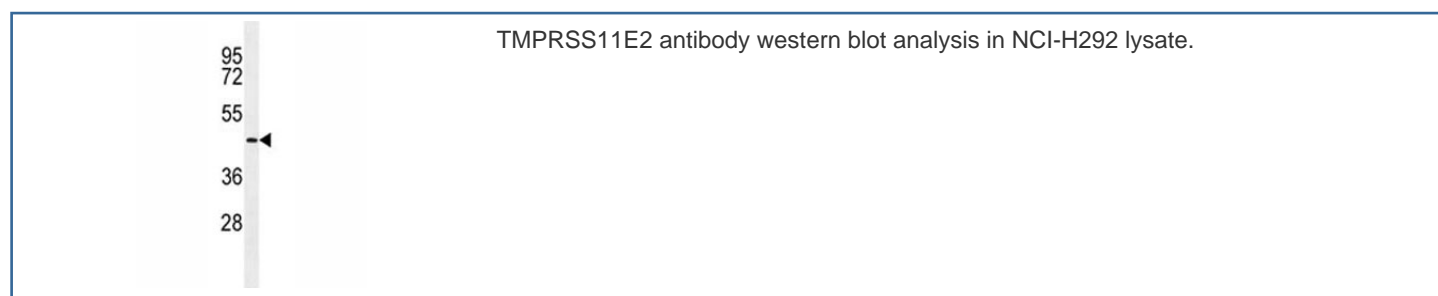


TMPRSS11E2 Antibody (F40096)

Catalog No.	Formulation	Size
F40096-0.4ML	In 1X PBS, pH 7.4, with 0.09% sodium azide	0.4 ml
F40096-0.08ML	In 1X PBS, pH 7.4, with 0.09% sodium azide	0.08 ml

[Bulk quote request](#)

Availability	1-3 business days
Species Reactivity	Human
Format	Antigen affinity purified
Host	Rabbit
Clonality	Polyclonal (rabbit origin)
Isotype	Rabbit Ig
Purity	Antigen affinity
UniProt	Q9UL52
Applications	Western Blot : 1:1000
Limitations	This TMPRSS11E2 antibody is available for research use only.



Description

TMPRSS11E is a serine protease which possesses both gelatinolytic and caseinolytic activities. Shows a preference for Arg in the P1 position (By similarity).

Application Notes

Titration of the TMPRSS11E2 antibody may be required due to differences in protocols and secondary/substrate sensitivity.

Immunogen

A portion of amino acids 249-277 from the human protein was used as the immunogen for this TMPRSS11E2 antibody.

Storage

Aliquot the TMPRSS11E2 antibody and store frozen at -20oC or colder. Avoid repeated freeze-thaw cycles.