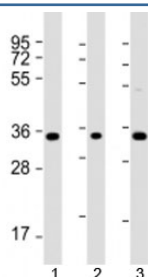


## TMEM158 Antibody (F53826)

Catalog No.	Formulation	Size
F53826-0.2ML	In 1X PBS, pH 7.4, with 0.09% sodium azide	0.2 ml
F53826-0.05ML	In 1X PBS, pH 7.4, with 0.09% sodium azide	0.05 ml

[Bulk quote request](#)

<b>Availability</b>	1-3 business days
<b>Species Reactivity</b>	Human
<b>Predicted Reactivity</b>	Mouse, Rat, Bovine
<b>Format</b>	Antigen affinity purified
<b>Host</b>	Rabbit
<b>Clonality</b>	Polyclonal (rabbit origin)
<b>Isotype</b>	Rabbit Ig
<b>Purity</b>	Antigen affinity
<b>UniProt</b>	Q8WZ71
<b>Applications</b>	Western Blot : 1:1000-2000
<b>Limitations</b>	This TMEM158 antibody is available for research use only.



Western blot testing of human 1) K562, 2) THP-1, and 3) HT-1080 cell lysate with TMEM158 antibody at 1:2000. Expected molecular weight: 30-40 kDa.

## Description

Transmembrane protein 158 is a receptor for brain injury-derived neurotrophic peptide (BINP), a synthetic 13-mer peptide.

## Application Notes

Titration of the TMEM158 antibody may be required due to differences in protocols and secondary/substrate sensitivity.

## Immunogen

A portion of amino acids 186-218 from the human protein was used as the immunogen for the WBP1 antibody.

## Storage

Aliquot the TMEM158 antibody and store frozen at -20oC or colder. Avoid repeated freeze-thaw cycles.