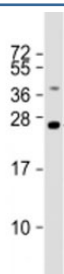


TMED4 Antibody (F53824)

Catalog No.	Formulation	Size
F53824-0.2ML	In 1X PBS, pH 7.4, with 0.09% sodium azide	0.2 ml
F53824-0.05ML	In 1X PBS, pH 7.4, with 0.09% sodium azide	0.05 ml

[Bulk quote request](#)

Availability	1-3 business days
Species Reactivity	Human
Predicted Reactivity	Mouse, Rat, Bovine
Format	Antigen affinity purified
Host	Rabbit
Clonality	Polyclonal (rabbit origin)
Isotype	Rabbit Ig
Purity	Antigen affinity
UniProt	Q7Z7H5
Applications	Western Blot : 1:1000-2000
Limitations	This TMED4 antibody is available for research use only.



Western blot testing of human liver lysate with TMED4 antibody at 1:2000. Predicted molecular weight: 26 kDa.

Description

Transmembrane emp24 domain-containing protein 4 is involved in vesicular protein trafficking, mainly in the early secretory pathway. targeting. Involved in the maintenance of the Golgi apparatus. Appears to play a role in the biosynthesis of secreted cargo including processing. Involved in endoplasmic reticulum stress response. May play a role in the regulation of heat-shock response and apoptosis (By similarity).

Application Notes

Titration of the TMED4 antibody may be required due to differences in protocols and secondary/substrate sensitivity.

Immunogen

A portion of amino acids 195-225 from the human protein was used as the immunogen for the TMED4 antibody.

Storage

Aliquot the TMED4 antibody and store frozen at -20oC or colder. Avoid repeated freeze-thaw cycles.