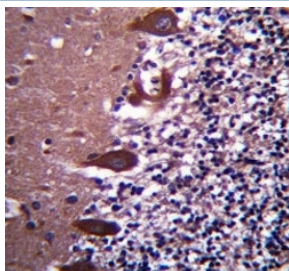


## TLE6 Antibody (F43005)

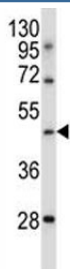
Catalog No.	Formulation	Size
F43005-0.4ML	In 1X PBS, pH 7.4, with 0.09% sodium azide	0.4 ml
F43005-0.08ML	In 1X PBS, pH 7.4, with 0.09% sodium azide	0.08 ml

[Bulk quote request](#)

<b>Availability</b>	1-3 business days
<b>Species Reactivity</b>	Human
<b>Format</b>	Antigen affinity purified
<b>Host</b>	Rabbit
<b>Clonality</b>	Polyclonal (rabbit origin)
<b>Isotype</b>	Rabbit Ig
<b>Purity</b>	Antigen affinity
<b>UniProt</b>	Q9H808
<b>Applications</b>	Western Blot : 1:1000 IHC (Paraffin) : 1:10-1:50
<b>Limitations</b>	This TLE6 antibody is available for research use only.



TLE6 antibody immunohistochemistry analysis in formalin fixed and paraffin embedded human cerebellum tissue.



TLE6 antibody western blot analysis in NCI-H460 lysate

## Description

As a member of the subcortical maternal complex (SCMC), plays an essential role for zygotes to progress beyond the first embryonic cell divisions (By similarity).

## Application Notes

Titration of the TLE6 antibody may be required due to differences in protocols and secondary/substrate sensitivity.

## Immunogen

A portion of amino acids 30-58 from the human protein was used as the immunogen for this TLE6 antibody.

## Storage

Aliquot the TLE6 antibody and store frozen at -20oC or colder. Avoid repeated freeze-thaw cycles.