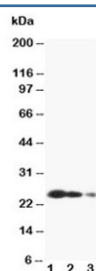


## TIMP3 Antibody (R30261)

Catalog No.	Formulation	Size
R30261	0.5mg/ml if reconstituted with 0.2ml sterile DI water	100 ug

**Bulk quote request**

<b>Availability</b>	1-3 business days
<b>Species Reactivity</b>	Human, Mouse, Rat
<b>Format</b>	Antigen affinity purified
<b>Host</b>	Rabbit
<b>Clonality</b>	Polyclonal (rabbit origin)
<b>Isotype</b>	Rabbit IgG
<b>Purity</b>	Antigen affinity
<b>Buffer</b>	Lyophilized from 1X PBS with 2.5% BSA and 0.025% sodium azide/thimerosal
<b>UniProt</b>	P35625
<b>Applications</b>	Western Blot : 0.5-1ug/ml ELISA : 0.1-0.5ug/ml (human protein tested); request BSA free format for coating
<b>Limitations</b>	This TIMP3 antibody is available for research use only.



Western blot testing of TIMP3 antibody and Lane 1: recombinant human protein 10ng; 2: 5ng; 3: 2.5ng

## Description

The tissue inhibitors of metalloproteinases (TIMPs) are natural inhibitors of the matrix metalloproteinases, a group of zinc-binding endopeptidases involved in the degradation of the extracellular matrix. The TIMP3 gene is expressed in many tissues, with highest expression in the placenta. TIMP3 encodes a potent angiogenesis inhibitor and is mutated in Sorsby fundus dystrophy, a macular degenerative disease with submacular choroidal neovascularization. TIMP3 gene is mapped to 22q12.1-q13.2. Mutations in TIMP3 cause the autosomal dominant disorder Sorsby's fundus dystrophy (SFD).

## Application Notes

The stated application concentrations are suggested starting amounts. Titration of the TIMP3 antibody may be required due to differences in protocols and secondary/substrate sensitivity.

## Immunogen

An amino acid sequence from the C-terminus of human TIMP3 (WAPPDKSIINATDP) was used as the immunogen for this TIMP3 antibody.

## Storage

After reconstitution, the TIMP3 antibody can be stored for up to one month at 4°C. For long-term, aliquot and store at -20°C. Avoid repeated freezing and thawing.