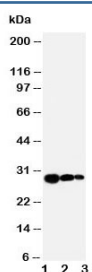


TIMP1 Antibody (R30456)

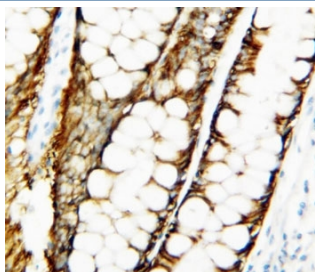
Catalog No.	Formulation	Size
R30456	0.5mg/ml if reconstituted with 0.2ml sterile DI water	100 ug

Bulk quote request

Availability	1-3 business days
Species Reactivity	Human
Format	Antigen affinity purified
Host	Rabbit
Clonality	Polyclonal (rabbit origin)
Isotype	Rabbit IgG
Purity	Antigen affinity
Buffer	Lyophilized from 1X PBS with 2.5% BSA and 0.025% sodium azide/thimerosal
UniProt	P01033
Localization	Cytoplasmic, secreted
Applications	Western Blot : 0.5-1ug/ml IHC (FFPE) : 0.5-1ug/ml
Limitations	This TIMP1 antibody is available for research use only.



Western blot testing of TIMP1 antibody and Lane 1: recombinant human protein 10ng; 2: 5ng; 3. 2.5ng



IHC-P: TIMP1 antibody testing of human breast cancer tissue

Description

Tissue inhibitor of metalloproteinases 1 is a glycoprotein that is expressed from the several tissues of organisms. This protein is a member of the TIMP family. The glycoprotein is a natural inhibitor of the matrix metalloproteinases (MMPs), a group of peptidases involved in degradation of the extracellular matrix. In addition to its inhibitory role against most of the known MMPs, the encoded protein is able to promote cell proliferation in a wide range of cell types, and may also have an anti-apoptotic function. Transcription of this gene is highly inducible in response to many cytokines and hormones. TIMP1 was found to be located about 22 cM proximal to OTC(300461).

Application Notes

The stated application concentrations are suggested starting amounts. Titration of the TIMP1 antibody may be required due to differences in protocols and secondary/substrate sensitivity.

Immunogen

An amino acid sequence from the C-terminus of human TIMP1 (CLPREPGLCTWQSLRSQIA) was used as the immunogen for this TIMP1 antibody.

Storage

After reconstitution, the TIMP1 antibody can be stored for up to one month at 4oC. For long-term, aliquot and store at -20oC. Avoid repeated freezing and thawing.