

TIMP-2 Antibody [clone 3A4] (V3344)

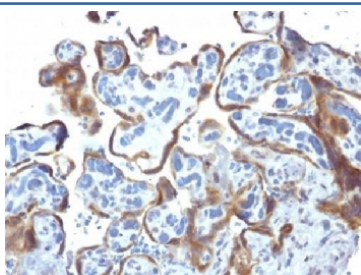
Catalog No.	Formulation	Size
V3344-100UG	0.2 mg/ml in 1X PBS with 0.1 mg/ml BSA (US sourced) and 0.05% sodium azide	100 ug
V3344-20UG	0.2 mg/ml in 1X PBS with 0.1 mg/ml BSA (US sourced) and 0.05% sodium azide	20 ug
V3344SAF-100UG	1 mg/ml in 1X PBS; BSA free, sodium azide free	100 ug



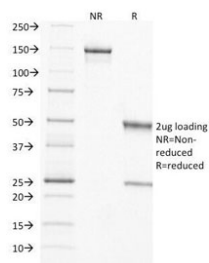
Citations (23)

[Bulk quote request](#)

Species Reactivity	Human, Mouse, Rat
Format	Purified
Host	Mouse
Clonality	Monoclonal (mouse origin)
Isotype	Mouse IgG2a, kappa
Clone Name	3A4
Purity	Protein G affinity chromatography
Buffer	1X PBS, pH 7.4
UniProt	P16035
Localization	Cytoplasmic, cell surface, secreted
Applications	Flow Cytometry : 0.5-1ug/10 ⁶ cells Immunofluorescence : 0.5-1ug/ml Western Blot : 0.5-1ug/ml Immunohistochemistry (FFPE) : 1-2ug/ml for 30 min at RT
Limitations	This TIMP-2 antibody is available for research use only.



IHC testing of FFPE human placenta with TIMP-2 antibody (clone 3A4). Required HIER: requires boil tissue sections in 10mM citrate buffer, pH 6, for 10-20 min followed by cooling at RT for 20 min.



SDS-PAGE Analysis of Purified, BSA-Free TIMP-2 Antibody (clone 3A4). Confirmation of Integrity and Purity of the Antibody.

Description

It recognizes a protein of 21kDa, identified as tissue inhibitor of metalloproteinases-2 (TIMP-2). It is closely related to TIMP-1 and shows the highest binding affinity to both the latent (pro) and active forms of 72kDa Type IV collagenase (also known as MMP-2 or gelatinase A). It also has affinity for the active form of 92kDa Type IV collagenase (also known as MMP-9 or gelatinase B). TIMP-2 inhibits the proteolytic invasiveness of tumor cells and normal placental trophoblast cells.

Application Notes

The concentration stated for each application is a general starting point. Variations in protocols, secondaries and substrates may require the TIMP-2 antibody to be titrated up or down for optimal performance.

Immunogen

Amino acids 56-66 (DSGNDIYGNPI) from the human protein were used as the immunogen for this TIMP-2 antibody.

Storage

Store the TIMP-2 antibody at 2-8°C (with azide) or aliquot and store at -20°C or colder (without azide).