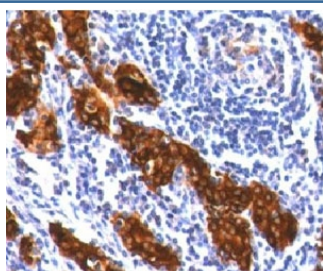


Thyroglobulin Antibody [clone TG157-2] (V7001)

Catalog No.	Formulation	Size
V7001-100UG	0.2 mg/ml in 1X PBS with 0.1 mg/ml BSA (US sourced) and 0.05% sodium azide	100 ug
V7001-20UG	0.2 mg/ml in 1X PBS with 0.1 mg/ml BSA (US sourced) and 0.05% sodium azide	20 ug
V7001SAF-100UG	1 mg/ml in 1X PBS; BSA free, sodium azide free	100 ug
V7001IHC-7ML	Prediluted in 1X PBS with 0.1 mg/ml BSA (US sourced) and 0.05% sodium azide; *For IHC use only*	7 ml

[Bulk quote request](#)

Species Reactivity	Human
Format	Purified
Host	Mouse
Clonality	Monoclonal (mouse origin)
Isotype	Mouse IgG1, k
Clone Name	TG157-2
Purity	Protein G affinity chromatography
Buffer	1X PBS, pH 7.4
Gene ID	7038
Localization	Cytoplasmic and secreted
Applications	Immunohistochemistry (FFPE) : 0.5-1ug/ml for 30 min at RT (1) Prediluted IHC Only Format : incubate for 30 min at RT (2)
Limitations	This Thyroglobulin antibody is available for research use only.



IHC testing of FFPE thyroid tissue stained with Thyroglobulin antibody (clone TG157-2).

Description

Thyroglobulin (Tg) is a glycoprotein homodimer produced predominantly by the thyroid gland. It acts as a substrate for the synthesis of thyroxine and triiodothyronine as well as the storage of the inactive forms of thyroid hormone and iodine. Thyroglobulin is secreted from the endoplasmic reticulum to its site of iodination, and subsequent thyroxine biosynthesis, in the follicular lumen. Mutations in this gene cause thyroid dyshormonogenesis, manifested as goiter, and are associated with moderate to severe congenital hypothyroidism. Polymorphisms in this gene are associated with susceptibility to autoimmune thyroid diseases (AITD) such as Graves disease and Hashimoto thyroiditis. [provided by RefSeq]

Application Notes

Titering of the Thyroglobulin antibody may be required for optimal performance.

1. FFPE testing requires sections to be boiled in pH 9 10mM Tris with 1mM EDTA for 10-20 minutes, followed by cooling at RT for 20 minutes, prior to staining.
2. The prediluted format is supplied in a dropper bottle and is optimized for use in IHC. After epitope retrieval step (if required), drip mAb solution onto the tissue section and incubate at RT for 30 min.

Immunogen

The immunogen for this Thyroglobulin antibody was human thyroid epithelial cells.

Storage

Store the Thyroglobulin antibody at 2-8oC (with azide) or aliquot and store at -20oC or colder (without azide).