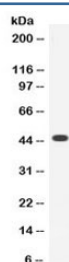


Thrombopoietin Antibody (R32570)

Catalog No.	Formulation	Size
R32570	0.5mg/ml if reconstituted with 0.2ml sterile DI water	100 ug

Bulk quote request

Availability	1-3 business days
Species Reactivity	Human
Format	Antigen affinity purified
Host	Rabbit
Clonality	Polyclonal (rabbit origin)
Isotype	Rabbit IgG
Purity	Antigen affinity
Buffer	Lyophilized from 1X PBS with 2.5% BSA and 0.025% sodium azide
UniProt	P40225
Applications	Western Blot : 0.5-1ug/ml ELISA : 0.5-1ug/ml (human protein tested); request BSA-free format for coating
Limitations	This Thrombopoietin antibody is available for research use only.



Western blot testing of human MCF7 cell lysate with Thrombopoietin antibody at 0.5ug/ml. Predicted molecular weight: 38 kDa, routinely observed at 40-55 kDa (unmodified), 80-95 kDa (glycosylated).

Description

Thrombopoietin (THPO), also known as megakaryocyte growth and development factor (MGDF), is a protein that in humans is encoded by the THPO gene. Megakaryocytopoiesis is the cellular development process that leads to platelet production. The main functional protein encoded by this gene is a humoral growth factor that is necessary for megakaryocyte proliferation and maturation, as well as for thrombopoiesis. This protein is the ligand for MLP/C_MPL, the product of myeloproliferative leukemia virus oncogene. Mutations in this gene are the cause of thrombocythemia 1. Alternative promoter usage and differential splicing result in multiple transcript variants differing in the 5' UTR and/or

coding region. Multiple AUG codons upstream of the main open reading frame (ORF) have been identified, and these upstream AUGs inhibit translation of the main ORF at different extent.

Application Notes

Differences in protocols and secondary/substrate sensitivity may require the Thrombopoietin antibody to be titrated for optimal performance.

Immunogen

Amino acids S22-R258 from the human protein were used as the immunogen for the Thrombopoietin antibody.

Storage

After reconstitution, the Thrombopoietin antibody can be stored for up to one month at 4oC. For long-term, aliquot and store at -20oC. Avoid repeated freezing and thawing.