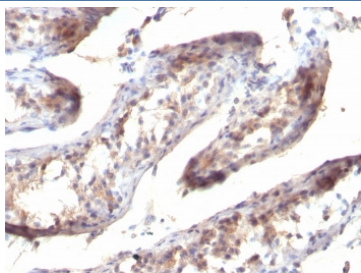


## TGF-a Antibody [clone SPM357] (V9085)

Catalog No.	Formulation	Size
V9085-100UG	0.2 mg/ml in 1X PBS with 0.1 mg/ml BSA (US sourced) and 0.05% sodium azide	100 ug
V9085-20UG	0.2 mg/ml in 1X PBS with 0.1 mg/ml BSA (US sourced) and 0.05% sodium azide	20 ug
V9085SAF-100UG	1 mg/ml in 1X PBS; BSA free, sodium azide free	100 ug

[Bulk quote request](#)

Availability	1-3 business days
Species Reactivity	Human
Format	Purified
Host	Mouse
Clonality	Monoclonal (mouse origin)
Isotype	Mouse IgG1, kappa
Clone Name	SPM357
Purity	Protein G affinity chromatography
UniProt	P01135
Localization	Cytoplasmic and Extracellular (secreted)
Applications	Immunohistochemistry (FFPE) : 1-2ug/ml
Limitations	This TGF-a antibody is available for research use only.



IHC staining of FFPE human testicular carcinoma with TGF-a antibody (clone SPM357).  
HIER: pH 9 10mM Tris with 1mM EDTA.

## Description

This antibody reacts with the C-terminus of TGF alpha and shows no cross-reaction with EGF and the neuropeptide synenkephalin. TGF-a is a growth factor with 33% homology to EGF, binds to EGFR, activates tyrosine phosphorylation of the receptor, and stimulates cell proliferation. It plays a role in tumor initiation by inducing the reversible transformed phenotype.

## Application Notes

The optimal dilution of the TGF-a antibody for each application should be determined by the researcher.

## Immunogen

A 17-amino acid peptide from the C-terminus of the rat protein was used as the immunogen for this TGF a antibody.

## Storage

Store the TGF-a antibody at 2-8oC (with azide) or aliquot and store at -20oC or colder (without azide).