

## Testosterone Antibody [clone 4E1G2] (V3056)

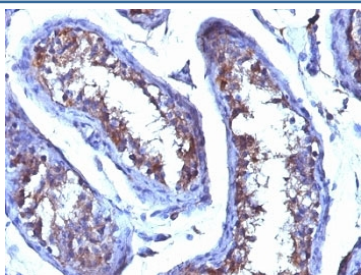
Catalog No.	Formulation	Size
V3056-100UG	0.2 mg/ml in 1X PBS with 0.1 mg/ml BSA (US sourced) and 0.05% sodium azide	100 ug
V3056-20UG	0.2 mg/ml in 1X PBS with 0.1 mg/ml BSA (US sourced) and 0.05% sodium azide	20 ug
V3056SAF-100UG	1 mg/ml in 1X PBS; BSA free, sodium azide free	100 ug



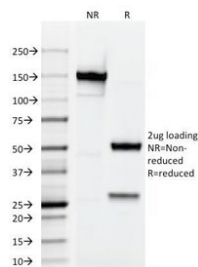
Citations (1)

[Bulk quote request](#)

<b>Availability</b>	1-3 business days
<b>Species Reactivity</b>	All species
<b>Format</b>	Purified
<b>Clonality</b>	Monoclonal (mouse origin)
<b>Isotype</b>	Mouse IgG1, kappa
<b>Clone Name</b>	4E1G2
<b>Purity</b>	Protein G affinity chromatography
<b>UniProt</b>	Not Applicable
<b>Localization</b>	Secreted and cytoplasmic
<b>Applications</b>	ELISA (order BSA/sodium Azide-free Format For Coating) : Radioimmunoassay (RIA) : Immunohistochemistry (FFPE) : 0.25-0.5ug/ml for 30 min at RT
<b>Limitations</b>	This Testosterone antibody is available for research use only.



IHC testing of FFPE human testicular carcinoma with Testosterone antibody (clone 4E1G2). Required HIER: boil tissue sections in 10mM citrate buffer, pH 6, for 10-20 min followed by cooling at RT for 20 min.



SDS-PAGE Analysis of Purified, BSA-Free Testosterone Antibody (clone 4E1G2).  
Confirmation of Integrity and Purity of the Antibody.

## Description

This mAb is highly specific to testosterone. Its affinity constant for testosterone is  $\sim 10^{10} \text{ M}^{-1}$ . In competitive binding immunoassay, it reacts with testosterone 100%, 11-beta-hydroxy testosterone 3.3%, 17-alpha-methyl testosterone.

## Application Notes

Optimal dilution of the Testosterone antibody should be determined by the researcher.

## Immunogen

Testosterone 3 CMO conjugated to BSA was used as the immunogen for the Testosterone antibody.

## Storage

Store the Testosterone antibody at 2-8°C (with azide) or aliquot and store at -20°C or colder (without azide).