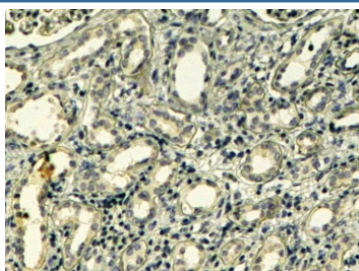


Tensin Antibody (R36340)

Catalog No.	Formulation	Size
R36340-100UG	0.5 mg/ml in 1X TBS, pH7.3, with 0.5% BSA (US sourced) and 0.02% sodium azide	100 ug

[Bulk quote request](#)

Availability	1-3 business days
Species Reactivity	Human
Predicted Reactivity	Cow, Dog, Mouse, Rat
Format	Antigen affinity purified
Clonality	Polyclonal (goat origin)
Isotype	Goat Ig
Purity	Antigen affinity
Gene ID	7145
Applications	Immunohistochemistry (FFPE) : 4-6ug/ml ELISA (peptide) LOD : 1:2000
Limitations	This Tensin antibody is available for research use only.



IHC testing of FFPE human kidney with Tensin antibody at 4ug/ml. HIER: steamed with pH9 Tris/EDTA buffer, HRP-staining. Weak staining of the basement membranes of the convoluted tubules is seen.

Description

Additional name(s) for this target protein: TNS; TNS1

Application Notes

Optimal dilution of the Tensin antibody should be determined by the researcher.

Immunogen

Amino acids VSKVMLNAGQKR were used as the immunogen for this Tensin antibody.

Storage

Aliquot and store the Tensin antibody at -20oC.