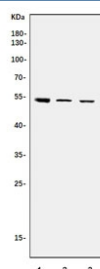


TEF-1 Antibody / TEAD1 (RQ6443)

Catalog No.	Formulation	Size
RQ6443	0.5mg/ml if reconstituted with 0.2ml sterile DI water	100 ug

Bulk quote request

Availability	1-3 business days
Species Reactivity	Human
Format	Purified
Host	Rabbit
Clonality	Polyclonal (rabbit origin)
Isotype	Rabbit IgG
Purity	Antigen affinity purified
Buffer	Lyophilized from 1X PBS with 2% Trehalose
UniProt	P28347
Localization	Nuclear
Applications	Western Blot : 0.5-1ug/ml Direct ELISA : 0.1-0.5ug/ml
Limitations	This TEF-1 antibody is available for research use only.



Western blot testing of human 1) HeLa, 2) A431 and 3) PC-3 cell lysate with TEF-1 antibody. Predicted molecular weight ~48 kDa.

Description

Transcriptional enhancer factor TEF-1 also known as TEA domain family member 1 (TEAD1) and transcription factor 13 (TCF-13) is a protein that in humans is encoded by the TEAD1 gene. This gene encodes a ubiquitous transcriptional enhancer factor that is a member of the TEA/ATTS domain family. This protein directs the transactivation of a wide variety of genes and, in placental cells, also acts as a transcriptional repressor. Mutations in this gene cause Sveinsson's

chorioretinal atrophy. Additional transcript variants have been described but their full-length natures have not been experimentally verified.

Application Notes

Optimal dilution of the TEF-1 antibody should be determined by the researcher.

Immunogen

Recombinant human protein (amino acids D38-D426) was used as the immunogen for the TEF-1 antibody.

Storage

After reconstitution, the TEF-1 antibody can be stored for up to one month at 4°C. For long-term, aliquot and store at -20°C. Avoid repeated freezing and thawing.