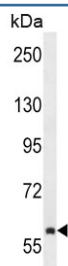


## TEC Antibody (F54447)

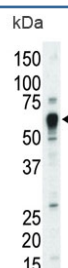
Catalog No.	Formulation	Size
F54447-0.4ML	In 1X PBS, pH 7.4, with 0.09% sodium azide	0.4 ml
F54447-0.08ML	In 1X PBS, pH 7.4, with 0.09% sodium azide	0.08 ml

[Bulk quote request](#)

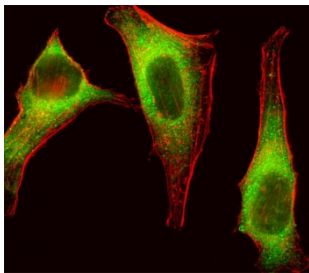
<b>Availability</b>	1-3 business days
<b>Species Reactivity</b>	Human, Mouse
<b>Format</b>	Purified
<b>Host</b>	Rabbit
<b>Clonality</b>	Polyclonal (rabbit origin)
<b>Isotype</b>	Rabbit Ig
<b>Purity</b>	Antigen affinity purified
<b>UniProt</b>	P42680
<b>Applications</b>	Immunofluorescence : 1:25 Western Blot : 1:500-1:2000 Immunohistochemistry (FFPE) : 1:25
<b>Limitations</b>	This TEC antibody is available for research use only.



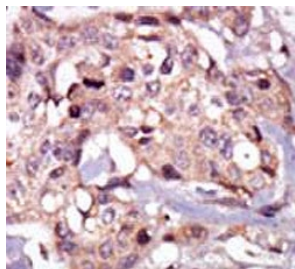
Western blot testing of human NCI-H292 cell lysate with TEC antibody. Expected molecular weight: 58-73 kDa (multiple isoforms).



Western blot testing of mouse liver lysate with TEC antibody. Expected molecular weight: 58-73 kDa (multiple isoforms).



Immunofluorescent staining of fixed and permeabilized human HeLa cells with TEC antibody (green) and anti-Actin (red).



IHC testing of FFPE human breast cancer tissue with Tec antibody. HIER: steam section in pH6 citrate buffer for 20 min and allow to cool prior to staining.

## Description

TEC belongs to the TEC subfamily of non-receptor protein-tyrosine kinases containing a pleckstrin homology domain. TEC family kinases are involved in the intracellular signaling mechanisms of cytokine receptors, lymphocyte surface antigens, heterotrimeric G-protein coupled receptors, and integrin molecules. They are also key players in the regulation of the immune functions. TEC kinase is an integral component of T cell signaling and has a distinct role in T cell activation. TEC may be associated with myelodysplastic syndrome.

## Application Notes

The stated application concentrations are suggested starting points. Titration of the TEC antibody may be required due to differences in protocols and secondary/substrate sensitivity.

## Immunogen

A portion of amino acids 175-205 from the human protein was used as the immunogen for the TEC antibody.

## Storage

Aliquot the TEC antibody and store frozen at -20°C or colder. Avoid repeated freeze-thaw cycles.