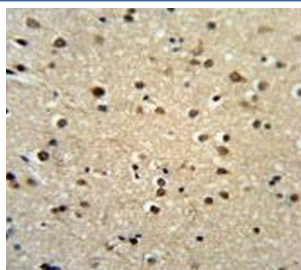


## Teashirt homolog 2 Antibody / TSHZ2 (F54818)

Catalog No.	Formulation	Size
F54818-0.4ML	In 1X PBS, pH 7.4, with 0.09% sodium azide	0.4 ml
F54818-0.08ML	In 1X PBS, pH 7.4, with 0.09% sodium azide	0.08 ml

[Bulk quote request](#)

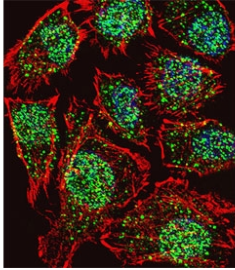
<b>Availability</b>	1-3 business days
<b>Species Reactivity</b>	Human
<b>Format</b>	Purified
<b>Clonality</b>	Polyclonal (rabbit origin)
<b>Isotype</b>	Rabbit Ig
<b>Purity</b>	Antigen affinity purified
<b>UniProt</b>	Q9NRE2
<b>Localization</b>	Nuclear
<b>Applications</b>	Immunofluorescence : 1:10-1:50 Flow Cytometry : 1:10-1:50 (1x10e6 cells) Western Blot : 1:500-1:1000 Immunohistochemistry (FFPE) : 1:50-1:100
<b>Limitations</b>	This Teashirt homolog 2 antibody is available for research use only.



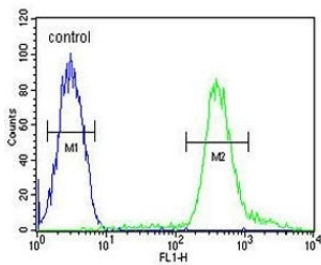
IHC testing of FFPE human brain tissue with Teashirt homolog 2 antibody. HIER: steam section in pH6 citrate buffer for 20 min and allow to cool prior to staining.

kDa  
250  
130  
95  
72

Western blot testing of human CCRF-CEM cell lysate with Teashirt homolog 2 antibody.  
Predicted molecular weight ~115 kDa.



Immunofluorescent staining of fixed and permeabilized human U-251 cells with Teashirt homolog 2 antibody (green), DAPI nuclear stain (blue) and anti-Actin (red).



Flow cytometry testing of human CCRF-CEM cells with Teashirt homolog 2 antibody;  
Blue=isotype control, Green= Teashirt homolog 2 antibody.

## Description

Probable transcriptional regulator involved in developmental processes. May act as a transcriptional repressor (Potential).  
[UniProt]

## Application Notes

The stated application concentrations are suggested starting points. Titration of the Teashirt homolog 2 antibody may be required due to differences in protocols and secondary/substrate sensitivity.

## Immunogen

A portion of amino acids 232-261 from the human protein was used as the immunogen for the Teashirt homolog 2 antibody.

## Storage

Aliquot the Teashirt homolog 2 antibody and store frozen at -20°C or colder. Avoid repeated freeze-thaw cycles.

