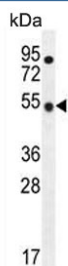


TBC1D13 Antibody (F54624)

Catalog No.	Formulation	Size
F54624-0.4ML	In 1X PBS, pH 7.4, with 0.09% sodium azide	0.4 ml
F54624-0.08ML	In 1X PBS, pH 7.4, with 0.09% sodium azide	0.08 ml

[Bulk quote request](#)

Availability	1-3 business days
Species Reactivity	Human, Mouse
Format	Purified
Host	Rabbit
Clonality	Polyclonal (rabbit origin)
Isotype	Rabbit Ig
Purity	Antigen affinity purified
UniProt	Q9NVG8
Localization	Cytoplasmic
Applications	Immunofluorescence : 1:25 Immunohistochemistry (FFPE) : 1:25 Western Blot : 1:500-1:2000
Limitations	This TBC1D13 antibody is available for research use only.

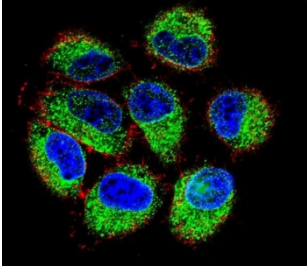


kDa
95
72
55
36
28
17

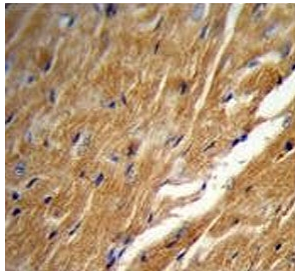
Western blot testing of human CCRF-CEM cell lysate with TBC1D13 antibody. Predicted molecular weight ~47 kDa.

kDa
95
72
55
36
28
17

Western blot testing of mouse spleen tissue lysate with TBC1D13 antibody. Predicted molecular weight ~47 kDa.



Immunofluorescent staining of human CCRF-CEM cells with TBC1D13 antibody (green), DAPI nuclear stain (blue) and anti-Actin (red).



IHC testing of FFPE mouse heart tissue with TBC1D13 antibody. HIER: steam section in pH6 citrate buffer for 20 min and allow to cool prior to staining.

Description

TBC1D13 may act as a GTPase-activating protein for Rab family protein(s).

Application Notes

The stated application concentrations are suggested starting points. Titration of the TBC1D13 antibody may be required due to differences in protocols and secondary/substrate sensitivity.

Immunogen

A portion of amino acids 76-105 from the human protein was used as the immunogen for the TBC1D13 antibody.

Storage

Aliquot the TBC1D13 antibody and store frozen at -20°C or colder. Avoid repeated freeze-thaw cycles.