

## Talin 2 Antibody / TLN2 (R32413)

Catalog No.	Formulation	Size
R32413	0.5mg/ml if reconstituted with 0.2ml sterile DI water	100 ug



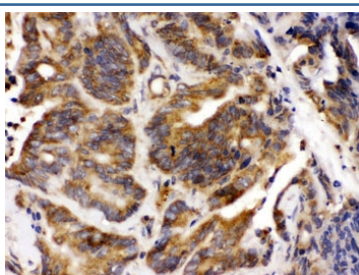
Citations (1)

[Bulk quote request](#)

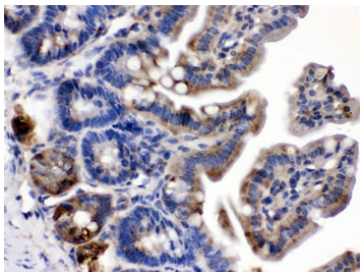
Availability	1-3 business days
Species Reactivity	Human, Mouse, Rat
Format	Antigen affinity purified
Clonality	Polyclonal (rabbit origin)
Isotype	Rabbit IgG
Purity	Antigen affinity
Buffer	Lyophilized from 1X PBS with 2.5% BSA and 0.025% sodium azide
UniProt	Q9Y4G6
Localization	Cytoplasmic, membranous
Applications	Western Blot : 0.1-0.5ug/ml Immunohistochemistry (FFPE) : 0.5-1ug/ml
Limitations	This Talin 2 antibody is available for research use only.



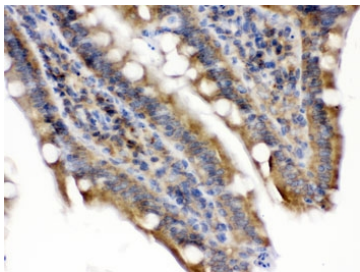
Western blot testing of 1) rat brain, 2) mouse heart and 3) human SMMC-7721 lysate with Talin 2 antibody. Expected/observed molecular weight ~271 kDa.



IHC testing of FFPE human intestinal cancer tissue with Talin 2 antibody. HIER: Boil the paraffin sections in pH 6, 10mM citrate buffer for 20 minutes and allow to cool prior to testing.



IHC testing of FFPE mouse intestine with Talin 2 antibody. HIER: Boil the paraffin sections in pH 6, 10mM citrate buffer for 20 minutes and allow to cool prior to testing.



IHC testing of FFPE rat intestine with Talin 2 antibody. HIER: Boil the paraffin sections in pH 6, 10mM citrate buffer for 20 minutes and allow to cool prior to testing.

## Description

Talin 2 is a protein in humans that is encoded by the TLN2 gene. It belongs to the talin protein family. This gene encodes a protein related to talin 1, a cytoskeletal protein that plays a significant role in the assembly of actin filaments and in spreading and migration of various cell types, including fibroblasts and osteoclasts. Talin-2 is expressed at high levels in cardiac muscle and functions to provide linkages between the extracellular matrix and actin cytoskeleton at costamere structures to transduce force laterally.

## Application Notes

Optimal dilution of the Talin 2 antibody should be determined by the researcher.

## Immunogen

Amino acids NPKAQHTHDAITEAAQLMKEAVDDIMVTLNEAASEV were used as the immunogen for the Talin 2 antibody.

## Storage

After reconstitution, the Talin 2 antibody can be stored for up to one month at 4°C. For long-term, aliquot and store at -20°C. Avoid repeated freezing and thawing.