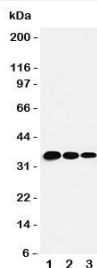


## T-bet Antibody (TBX21) (R31106)

Catalog No.	Formulation	Size
R31106	0.5mg/ml if reconstituted with 0.2ml sterile DI water	100 ug

### Bulk quote request

<b>Availability</b>	1-3 business days
<b>Species Reactivity</b>	Human, Mouse, Rat
<b>Format</b>	Antigen affinity purified
<b>Host</b>	Rabbit
<b>Clonality</b>	Polyclonal (rabbit origin)
<b>Isotype</b>	Rabbit IgG
<b>Purity</b>	Antigen affinity
<b>Buffer</b>	Lyophilized from 1X PBS with 2.5% BSA and 0.025% sodium azide/thimerosal
<b>UniProt</b>	Q9UL17
<b>Applications</b>	Western Blot : 0.5-1ug/ml
<b>Limitations</b>	This T-bet antibody is available for research use only.



Western blot testing of T-bet antibody and human recombinant protein, 35KD with tag;  
Lane 1: 5ng; 2: 2.5ng; 3: 1.25ng

## Description

TBX21 (T-Box 21), also called T-bet (T-box expressed in T cells), is a protein that in humans is encoded by the TBX21 gene. This gene is a member of a phylogenetically conserved family of genes that share a common DNA-binding domain, the T-box. Zhang and Yang(2000) mapped the mouse Tbx21 gene to chromosome 11D in an area showing homology of synteny with human chromosome 17. Szabo et al.(2000) showed that expression correlates with IFNG expression in Th1 and natural killer(NK) cells. Ectopic expression of T-bet both transactivated the IFNG gene and induced endogenous IFNG production. Finotto et al.(2002) observed reduced expression of the T(H)1 transcription factor T-bet in T cells from airways of patients with asthma compared with that in T cells from airways of nonasthmatic patients, suggesting that loss

might be associated with asthma.

## Application Notes

The stated application concentrations are suggested starting amounts. Titration of the T-bet antibody may be required due to differences in protocols and secondary/substrate sensitivity.

## Immunogen

An amino acid sequence from the C-terminus of human T-box expressed in T cells (DKEAEGQFYNYFPN) was used as the immunogen for this T-bet antibody.

## Storage

After reconstitution, the T-bet antibody can be stored for up to one month at 4°C. For long-term, aliquot and store at -20°C. Avoid repeated freezing and thawing.