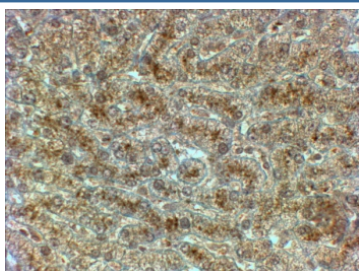


## SYVN1 Antibody (R35535)

Catalog No.	Formulation	Size
R35535-100UG	0.5 mg/ml in 1X TBS, pH7.3, with 0.5% BSA (US sourced) and 0.02% sodium azide	100 ug

[Bulk quote request](#)

Availability	1-3 business days
Species Reactivity	Human
Predicted Reactivity	Rat
Format	Antigen affinity purified
Clonality	Polyclonal (goat origin)
Isotype	Goat Ig
Purity	Antigen affinity
Gene ID	84447
Applications	Immunohistochemistry (FFPE) : 2-4ug/ml ELISA (peptide) LOD : 1:32000
Limitations	This SYVN1 antibody is available for research use only.



IHC testing of FFPE human liver with SYVN1 antibody at 2ug/ml. HIER: steamed with pH6 citrate buffer, HRP-staining.

### Description

Additional name(s) for this target protein: Synoviolin 1

### Application Notes

Optimal dilution of the SYVN1 antibody should be determined by the researcher.

### Immunogen

Amino acids RALEGHERQHLE were used as the immunogen for this SYVN1 antibody.

## **Storage**

Aliquot and store the SYVN1 antibody at -20oC.