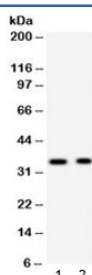


## Synaptophysin Antibody (R31914)

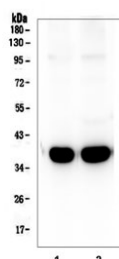
Catalog No.	Formulation	Size
R31914	0.5mg/ml if reconstituted with 0.2ml sterile DI water	100 ug

**Bulk quote request**

<b>Availability</b>	1-3 business days
<b>Species Reactivity</b>	Human, Mouse, Rat
<b>Format</b>	Antigen affinity purified
<b>Host</b>	Rabbit
<b>Clonality</b>	Polyclonal (rabbit origin)
<b>Isotype</b>	Rabbit IgG
<b>Purity</b>	Antigen affinity
<b>Buffer</b>	Lyophilized from 1X PBS with 2.5% BSA and 0.025% sodium azide
<b>UniProt</b>	P08247
<b>Applications</b>	Western Blot : 0.1-0.5ug/ml
<b>Limitations</b>	This Synaptophysin antibody is available for research use only.



Western blot testing of 1) rat brain and 2) mouse brain lysate with Synaptophysin antibody. Predicted/observed molecular weight: 34~38 kDa.



Western blot testing of 1) rat brain and 2) mouse brain lysate with Synaptophysin antibody. Predicted/observed molecular weight: 34~38 kDa.

## Description

SYP (Synaptophysin) is located on the short arm of X chromosome (Xp11.23-p11.22). The protein is a synaptic vesicle glycoprotein with four transmembrane domains weighing 38kDa. It is present in neuroendocrine cells and in virtually all neurons in the brain and spinal cord that participate in synaptic transmission. It acts as a marker for neuroendocrine tumors, and its ubiquity at the synapse has led to the use of synaptophysin immunostaining for quantification of synapses. Also, the protein binds cholesterol and is thought to direct targeting of vesicle-associated membrane protein 2 (synaptobrevin) to intracellular compartments. Mutations in this gene are associated with X-linked mental retardation (XLMR).

## Application Notes

Optimal dilution of the Synaptophysin antibody should be determined by the researcher.

## Immunogen

Amino acids MLLADMDVVNQLVAGGQFRVVKEPL of human Synaptophysin were used as the immunogen for the Synaptophysin antibody.

## Storage

After reconstitution, the Synaptophysin antibody can be stored for up to one month at 4°C. For long-term, aliquot and store at -20°C. Avoid repeated freezing and thawing.