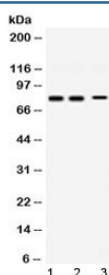


Synapsin 1 Antibody (R32567)

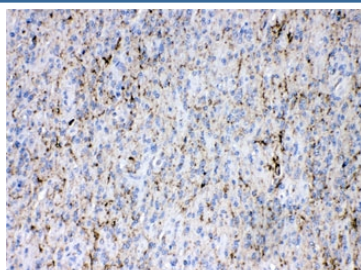
Catalog No.	Formulation	Size
R32567	0.5mg/ml if reconstituted with 0.2ml sterile DI water	100 ug

Bulk quote request

Availability	1-3 business days
Species Reactivity	Human, Mouse, Rat
Format	Antigen affinity purified
Host	Rabbit
Clonality	Polyclonal (rabbit origin)
Isotype	Rabbit IgG
Purity	Antigen affinity
Buffer	Lyophilized from 1X PBS with 2.5% BSA and 0.025% sodium azide
UniProt	P17600
Localization	Cell junctions
Applications	Western Blot : 0.5-1ug/ml IHC (FFPE) : 1-2ug/ml
Limitations	This Synapsin 1 antibody is available for research use only.



Western blot testing of 1) rat brain, 2) mouse brain and 3) human SHG-44 (human glioma) lysate with Synapsin 1 antibody at 0.5ug/ml. Expected molecular weight ~78 kDa.



IHC testing of FFPE human glioma tissue with Synapsin 1 antibody at 1ug/ml. HIER: steam section in pH6 citrate buffer for 20 min.

Description

Synapsin I, is the collective name for Synapsin Ia and Synapsin Ib, two nearly identical phosphoproteins that in humans are encoded by the SYN1 gene. This gene is a member of the synapsin gene family. Synapsins encode neuronal phosphoproteins which associate with the cytoplasmic surface of synaptic vesicles. Family members are characterized by common protein domains, and they are implicated in synaptogenesis and the modulation of neurotransmitter release, suggesting a potential role in several neuropsychiatric diseases. This member of the synapsin family plays a role in regulation of axonogenesis and synaptogenesis. The protein encoded serves as a substrate for several different protein kinases and phosphorylation may function in the regulation of this protein in the nerve terminal. Mutations in this gene may be associated with X-linked disorders with primary neuronal degeneration such as Rett syndrome. Alternatively spliced transcript variants encoding different isoforms have been identified.

Application Notes

Differences in protocols and secondary/substrate sensitivity may require the Synapsin 1 antibody to be titrated for optimal performance.

Immunogen

Amino acids 662-705 (KSQSLTNAFNLPEPAPPRPSLSQDEVKAETIRSLRKSFASLFSD) from the human protein were used as the immunogen for the Synapsin 1 antibody.

Storage

After reconstitution, the Synapsin 1 antibody can be stored for up to one month at 4oC. For long-term, aliquot and store at -20oC. Avoid repeated freezing and thawing.