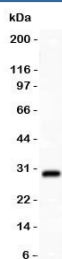


SYCP3 Antibody (SCP3) (R30137)

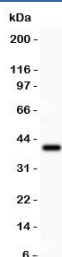
Catalog No.	Formulation	Size
R30137	0.5mg/ml if reconstituted with 0.2ml sterile DI water	100 ug

Bulk quote request

Availability	1-3 business days
Species Reactivity	Human
Format	Antigen affinity purified
Host	Rabbit
Clonality	Polyclonal (rabbit origin)
Isotype	Rabbit IgG
Purity	Antigen affinity
Buffer	Lyophilized from 1X PBS with 2.5% BSA and 0.025% sodium azide
Gene ID	50511
Applications	Western Blot : 0.5-1ug/ml
Limitations	This SYCP3 antibody is available for research use only.



Western blot testing of SYCP3 antibody and HT1080 lysate; Expected molecular weight: 28-34 kDa.



Western blot testing of SYCP3 antibody and recombinant human protein (0.5ng)

Description

Synaptonemal complex protein 3, also known as COR1 or SCP3, is in humans is encoded by the SYCP3 gene. This gene encodes an essential structural component of the synaptonemal complex. This complex is involved in synapsis, recombination and segregation of meiotic chromosomes. Mutations in this gene are associated with azoospermia in males and susceptibility to pregnancy loss in females. Alternate splicing results in multiple transcript variants that encode the same protein. SYCP3 has an essential meiotic function in human spermatogenesis that is compromised by the mutant protein by dominant-negative interference. SYCP3 is linked to inherited aneuploidy in female germ cells and provides a model system for studying age-dependent degeneration in oocytes.

Application Notes

The stated application concentrations are suggested starting amounts. Titration of the SYCP3 antibody may be required due to differences in protocols and secondary/substrate sensitivity.

Immunogen

Human partial recombinant protein (AA 18-223) was used as the immunogen for this SYCP3 antibody.

Storage

After reconstitution, the SYCP3 antibody can be stored for up to one month at 4°C. For long-term, aliquot and store at -20°C. Avoid repeated freezing and thawing.